



# IFN- $\gamma$ rabbit pAb

Cat No.:ES2593

For research use only

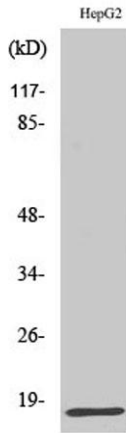
## Overview

<b>Product Name</b>	IFN- $\gamma$ rabbit pAb
<b>Host species</b>	Rabbit
<b>Applications</b>	WB;IHC;IF;ELISA
<b>Species Cross-Reactivity</b>	Human;Rat;Mouse;
<b>Recommended dilutions</b>	Western Blot: 1/500 - 1/2000. Immunohistochemistry: 1/100 - 1/300. ELISA: 1/40000. Not yet tested in other applications.
<b>Immunogen</b>	The antiserum was produced against synthesized peptide derived from human IFN-gamma. AA range:20-69
<b>Specificity</b>	IFN- $\gamma$ Polyclonal Antibody detects endogenous levels of IFN- $\gamma$ protein.
<b>Formulation</b>	Liquid in PBS containing 50% glycerol, 0.5% BSA and 0.02% sodium azide.
<b>Storage</b>	Store at -20°C. Avoid repeated freeze-thaw cycles.
<b>Protein Name</b>	Interferon gamma
<b>Gene Name</b>	IFNG
<b>Cellular localization</b>	Secreted.
<b>Purification</b>	The antibody was affinity-purified from rabbit antiserum by affinity-chromatography using epitope-specific immunogen.
<b>Clonality</b>	Polyclonal
<b>Concentration</b>	1 mg/ml
<b>Observed band</b>	17kD
<b>Human Gene ID</b>	3458
<b>Human Swiss-Prot Number</b>	P01579
<b>Alternative Names</b>	IFNG; Interferon gamma; IFN-gamma; Immune interferon
<b>Background</b>	This gene encodes a soluble cytokine that is a member of the type II interferon class. The encoded protein is secreted by cells of both the innate and adaptive immune systems. The active protein is a homodimer that binds to the interferon gamma



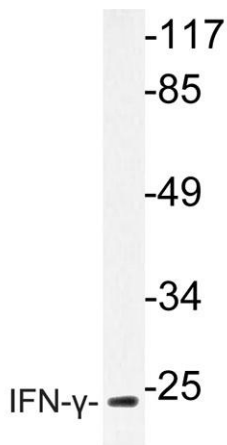
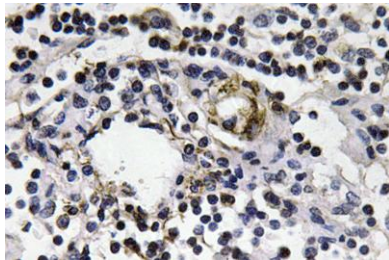


receptor which triggers a cellular response to viral and microbial infections. Mutations in this gene are associated with an increased susceptibility to viral, bacterial and parasitic infections and to several autoimmune diseases. [provided by RefSeq, Dec 2015],



Western Blot analysis of various cells using IFN- $\gamma$  Polyclonal Antibody diluted at 1:1000

Immunohistochemistry analysis of IFN- $\gamma$  antibody in paraffin-embedded human lymph node tissue.



Western blot analysis of lysate from HepG2 cells, using IFN- $\gamma$  antibody.

