



IFITM3 rabbit pAb

Cat No.:ES2592

For research use only

Overview

Product Name	IFITM3 rabbit pAb
Host species	Rabbit
Applications	WB;IF;ELISA
Species Cross-Reactivity	Human;Rat;Mouse;
Recommended dilutions	Western Blot: 1/500 - 1/2000. Immunofluorescence: 1/200 - 1/1000. ELISA: 1/40000. Not yet tested in other applications.
Immunogen	The antiserum was produced against synthesized peptide derived from human IFM3. AA range:1-50
Specificity	IFITM3 Polyclonal Antibody detects endogenous levels of IFITM3 protein.
Formulation	Liquid in PBS containing 50% glycerol, 0.5% BSA and 0.02% sodium azide.
Storage	Store at -20°C. Avoid repeated freeze-thaw cycles.
Protein Name	Interferon-induced transmembrane protein 3
Gene Name	IFITM3
Cellular localization	Cell membrane ; Single-pass type II membrane protein . Late endosome membrane ; Single-pass type II membrane protein . Early endosome membrane ; Single-pass type II membrane protein. Lysosome membrane ; Single-pass type II membrane protein . Cytoplasm, perinuclear region . Co-localizes with BRI3 isoform 1 at the perinuclear region. .
Purification	The antibody was affinity-purified from rabbit antiserum by affinity-chromatography using epitope-specific immunogen.
Clonality	Polyclonal
Concentration	1 mg/ml
Observed band	15kD
Human Gene ID	10410
Human Swiss-Prot Number	Q01628
Alternative Names	IFITM3; Interferon-induced transmembrane protein 3; Dispanin subfamily A member 2b; DSPA2b;

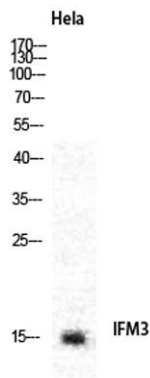




Background

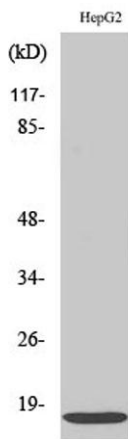
Interferon-inducible protein 1-8U

The protein encoded by this gene is an interferon-induced membrane protein that helps confer immunity to influenza A H1N1 virus, West Nile virus, and dengue virus. Two transcript variants, only one of them protein-coding, have been found for this gene. Another variant encoding an N-terminally truncated isoform has been reported, but the full-length nature of this variant has not been determined. [provided by RefSeq, May 2012],



Western Blot analysis of various cells using IFITM3

Polyclonal Antibody diluted at 1:2000



Western Blot analysis of HepG2 cells using IFITM3

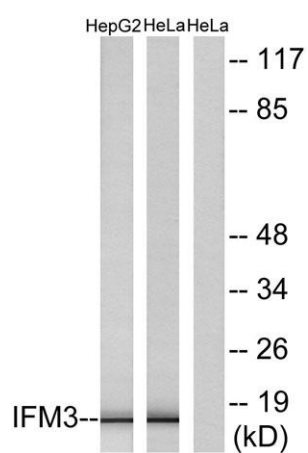
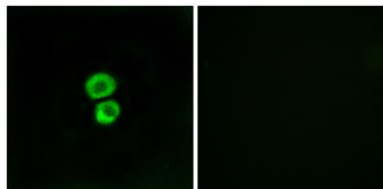
Polyclonal Antibody diluted at 1:2000





ELK Biotechnology

Immunofluorescence analysis of MCF7 cells, using IFM3 Antibody. The picture on the right is blocked with the synthesized peptide.



Western blot analysis of lysates from HepG2 and HeLa cells, using IFM3 Antibody. The lane on the right is blocked with the synthesized peptide.



+86-27-59760950

ELKbio@ELKbiotech.com

www.elkbiotech.com

23-2, No.388 Gaoxin 2nd Road, Wuhan East Lake Hi-tech Development Zone, Hubei, P.R.C