



HSP90A rabbit pAb

Cat No.:ES2585

For research use only

Overview

| | |
|---------------------------------|---|
| Product Name | HSP90A rabbit pAb |
| Host species | Rabbit |
| Applications | WB;IHC;IF;ELISA |
| Species Cross-Reactivity | Human;Mouse;Rat |
| Recommended dilutions | Western Blot: 1/500 - 1/2000. Immunohistochemistry: 1/100 - 1/300. Immunofluorescence: 1/200 - 1/1000. ELISA: 1/40000. Not yet tested in other applications. |
| Immunogen | The antiserum was produced against synthesized peptide derived from human HSP90A. AA range:683-732 |
| Specificity | HSP90A Polyclonal Antibody detects endogenous levels of HSP90A protein. |
| Formulation | Liquid in PBS containing 50% glycerol, 0.5% BSA and 0.02% sodium azide. |
| Storage | Store at -20°C. Avoid repeated freeze-thaw cycles. |
| Protein Name | Heat shock protein HSP 90-alpha |
| Gene Name | HSP90AA1 |
| Cellular localization | Nucleus . Cytoplasm . Melanosome . Cell membrane . Mitochondrion . Identified by mass spectrometry in melanosome fractions from stage I to stage IV. |
| Purification | The antibody was affinity-purified from rabbit antiserum by affinity-chromatography using epitope-specific immunogen. |
| Clonality | Polyclonal |
| Concentration | 1 mg/ml |
| Observed band | 85kD |
| Human Gene ID | 3320 |
| Human Swiss-Prot Number | P07900 |
| Alternative Names | HSP90AA1; HSP90A; HSPC1; HSPCA; Heat shock protein HSP 90-alpha; Heat shock 86 kDa; HSP 86; HSP86; Renal carcinoma antigen NY-REN-38 |

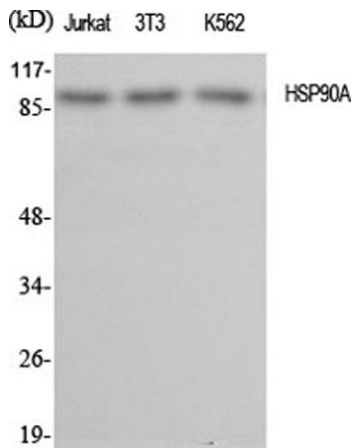
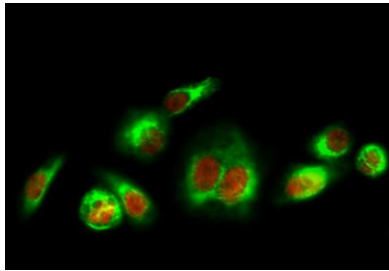




Background

The protein encoded by this gene is an inducible molecular chaperone that functions as a homodimer. The encoded protein aids in the proper folding of specific target proteins by use of an ATPase activity that is modulated by co-chaperones. Two transcript variants encoding different isoforms have been found for this gene. [provided by RefSeq, Jan 2012],

Immunofluorescence analysis of HeLa cell. 1, HSP90A Polyclonal Antibody (red) was diluted at 1:200 (4° overnight). Active Caspase-3 Monoclonal Antibody (5E1) (green) was diluted at 1:200 (4° overnight). 2, Goat Anti Rabbit Alexa Fluor 594 Catalog: RS3611 was diluted at 1:200 (4° overnight).



Western Blot analysis of various cells using HSP90A Polyclonal Antibody diluted at 1:2000



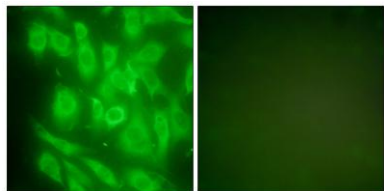
Western Blot analysis of HeLa cells using HSP90A Polyclonal Antibody diluted at 1:2000





ELK Biotechnology

Immunofluorescence analysis of NIH/3T3 cells, using HSP90A Antibody. The picture on the right is blocked with the synthesized peptide.



+86-27-59760950

ELKbio@ELKbiotech.com

www.elkbiotech.com

23-2, No.388 Gaoxin 2nd Road,Wuhan East Lake Hi-tech Development Zone, Hubei , P.R.C