



HSP60 rabbit pAb

Cat No.:ES2584

For research use only

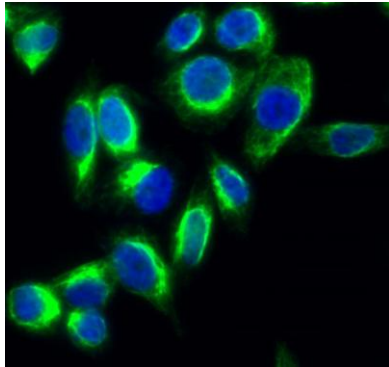
Overview

Product Name	HSP60 rabbit pAb
Host species	Rabbit
Applications	WB;IHC;IF;ELISA
Species Cross-Reactivity	Human;Mouse;Rat
Recommended dilutions	Western Blot: 1/500 - 1/2000. Immunohistochemistry: 1/100 - 1/300. Immunofluorescence: 1/200 - 1/1000. ELISA: 1/10000. Not yet tested in other applications.
Immunogen	The antiserum was produced against synthesized peptide derived from human HSP60. AA range:511-560
Specificity	HSP60 Polyclonal Antibody detects endogenous levels of HSP60 protein.
Formulation	Liquid in PBS containing 50% glycerol, 0.5% BSA and 0.02% sodium azide.
Storage	Store at -20°C. Avoid repeated freeze-thaw cycles.
Protein Name	60 kDa heat shock protein mitochondrial
Gene Name	HSPD1
Cellular localization	Mitochondrion matrix.
Purification	The antibody was affinity-purified from rabbit antiserum by affinity-chromatography using epitope-specific immunogen.
Clonality	Polyclonal
Concentration	1 mg/ml
Observed band	68kD
Human Gene ID	3329
Human Swiss-Prot Number	P10809
Alternative Names	HSPD1; HSP60; 60 kDa heat shock protein; mitochondrial; 60 kDa chaperonin; Chaperonin 60; CPN60; Heat shock protein 60; HSP-60; Hsp60; HuCHA60; Mitochondrial matrix protein P1; P60 lymphocyte protein
Background	This gene encodes a member of the chaperonin

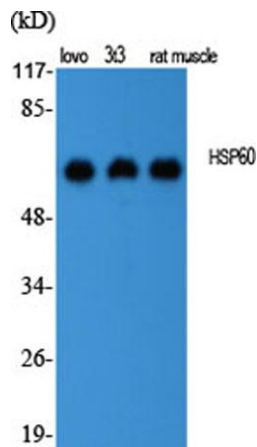




family. The encoded mitochondrial protein may function as a signaling molecule in the innate immune system. This protein is essential for the folding and assembly of newly imported proteins in the mitochondria. This gene is adjacent to a related family member and the region between the 2 genes functions as a bidirectional promoter. Several pseudogenes have been associated with this gene. Two transcript variants encoding the same protein have been identified for this gene. Mutations associated with this gene cause autosomal recessive spastic paraplegia 13. [provided by RefSeq, Jun 2010],

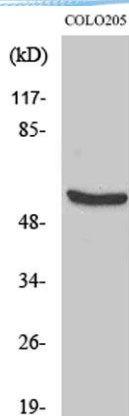


Immunofluorescence analysis of HeLa cell. 1, HSP60 Polyclonal Antibody (green) was diluted at 1:200 (4° overnight). 2, Goat Anti Rabbit Alexa Fluor 488 Catalog: RS3211 was diluted at 1:1000 (room temperature, 50min). 3 DAPI (blue) 10min.

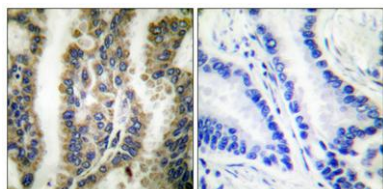


Western Blot analysis of various cells using HSP60 Polyclonal Antibody diluted at 1:2000





Western Blot analysis of COLO205 cells using HSP60
Polyclonal Antibody diluted at 1:2000



Immunohistochemical analysis of paraffin-embedded
Human lung cancer. Antibody was diluted at 1:100(4°
overnight). High-pressure and temperature
Tris-EDTA,pH8.0 was used for antigen retrieval. Negative
contrl (right) obtained from antibody was pre-absorbed by
immunogen peptide.

