



HSFX1 rabbit pAb

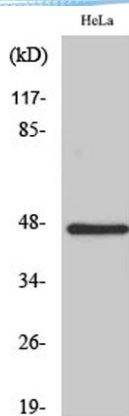
Cat No.:ES2573

For research use only

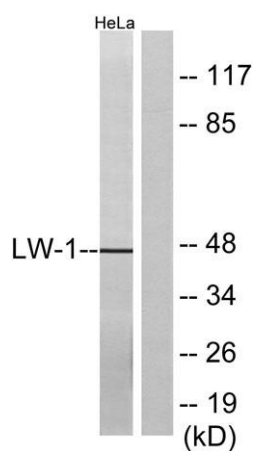
Overview

Product Name	HSFX1 rabbit pAb
Host species	Rabbit
Applications	WB;ELISA
Species Cross-Reactivity	Human;Rat;Mouse;
Recommended dilutions	Western Blot: 1/500 - 1/2000. ELISA: 1/10000. Not yet tested in other applications.
Immunogen	The antiserum was produced against synthesized peptide derived from human LW-1. AA range:10-59
Specificity	HSFX1 Polyclonal Antibody detects endogenous levels of HSFX1 protein.
Formulation	Liquid in PBS containing 50% glycerol, 0.5% BSA and 0.02% sodium azide.
Storage	Store at -20°C. Avoid repeated freeze-thaw cycles.
Protein Name	Heat shock transcription factor X-linked
Gene Name	HSFX1
Cellular localization	Nucleus . Cytoplasm .
Purification	The antibody was affinity-purified from rabbit antiserum by affinity-chromatography using epitope-specific immunogen.
Clonality	Polyclonal
Concentration	1 mg/ml
Observed band	47kD
Human Gene ID	100130086/100506164
Human Swiss-Prot Number	Q9UBD0
Alternative Names	HSFX1; LW-1; HSFX2; Heat shock transcription factor; X-linked
Background	similarity:Belongs to the HSF family.,tissue specificity:Testis-specific.,





Western Blot analysis of various cells using HSF1 Polyclonal Antibody



Western blot analysis of lysates from HeLa cells, using LW-1 Antibody. The lane on the right is blocked with the synthesized peptide.

