



# HORMAD1 rabbit pAb

Cat No.:ES2555

For research use only

## Overview

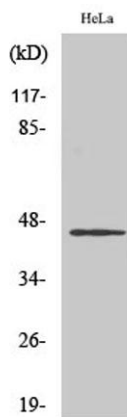
<b>Product Name</b>	HORMAD1 rabbit pAb
<b>Host species</b>	Rabbit
<b>Applications</b>	WB;ELISA
<b>Species Cross-Reactivity</b>	Human;Rat;Mouse;
<b>Recommended dilutions</b>	Western Blot: 1/500 - 1/2000. ELISA: 1/10000. Not yet tested in other applications.
<b>Immunogen</b>	The antiserum was produced against synthesized peptide derived from human HORMAD1. AA range:321-370
<b>Specificity</b>	HORMAD1 Polyclonal Antibody detects endogenous levels of HORMAD1 protein.
<b>Formulation</b>	Liquid in PBS containing 50% glycerol, 0.5% BSA and 0.02% sodium azide.
<b>Storage</b>	Store at -20°C. Avoid repeated freeze-thaw cycles.
<b>Protein Name</b>	HORMA domain-containing protein 1
<b>Gene Name</b>	HORMAD1
<b>Cellular localization</b>	Nucleus . Chromosome . Preferentially localizes to unsynapsed or desynapsed chromosomal regions during the prophase I stage of meiosis. TRIP13 is required for depletion from synapsed chromosomes. The expression of the phosphorylated form at Ser-377 is res
<b>Purification</b>	The antibody was affinity-purified from rabbit antiserum by affinity-chromatography using epitope-specific immunogen.
<b>Clonality</b>	Polyclonal
<b>Concentration</b>	1 mg/ml
<b>Observed band</b>	45kD
<b>Human Gene ID</b>	84072
<b>Human Swiss-Prot Number</b>	Q86X24
<b>Alternative Names</b>	HORMAD1; NOHMA; HORMA domain-containing protein 1; Cancer/testis antigen 46; CT46; Newborn ovary HORMA protein



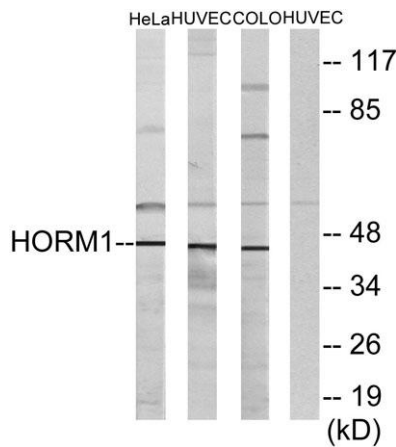


## Background

This gene encodes a HORMA domain-containing protein. HORMA domains are involved in chromatin binding and play a role in cell cycle regulation. The encoded protein may play a role in meiosis, and expression of this gene is a potential marker for cancer. A pseudogene of this gene is located on the long arm of chromosome 6. Alternatively spliced transcript variants encoding multiple isoforms have been observed for this gene. [provided by RefSeq, Dec 2010],



Western Blot analysis of various cells using HORMAD1 Polyclonal Antibody cells nucleus extracted by Minute TM Cytoplasmic and Nuclear Fractionation kit (SC-003, Inventbiotech, MN, USA).



Western blot analysis of lysates from HeLa, HUVEC, and COLO cells, using HORMAD1 Antibody. The lane on the right is blocked with the synthesized peptide.

