

hnRNP LL rabbit pAb

Cat No.:ES2553

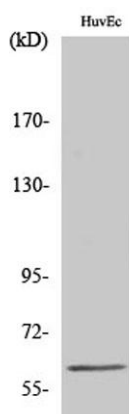
For research use only

Overview

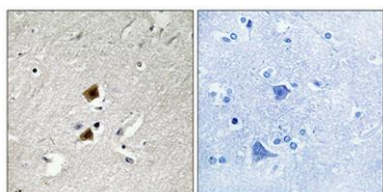
Product Name	hnRNP LL rabbit pAb
Host species	Rabbit
Applications	WB;IHC;IF;ELISA
Species Cross-Reactivity	Human;Mouse;Rat
Recommended dilutions	Western Blot: 1/500 - 1/2000. Immunohistochemistry: 1/100 - 1/300. ELISA: 1/20000. Not yet tested in other applications.
Immunogen	The antiserum was produced against synthesized peptide derived from human HNRPLL. AA range:241-290
Specificity	hnRNP LL Polyclonal Antibody detects endogenous levels of hnRNP LL protein.
Formulation	Liquid in PBS containing 50% glycerol, 0.5% BSA and 0.02% sodium azide.
Storage	Store at -20°C. Avoid repeated freeze-thaw cycles.
Protein Name	Heterogeneous nuclear ribonucleoprotein L-like
Gene Name	HNRPLL
Cellular localization	nucleus,membrane,viral nucleocapsid,intracellular ribonucleoprotein complex,
Purification	The antibody was affinity-purified from rabbit antiserum by affinity-chromatography using epitope-specific immunogen.
Clonality	Polyclonal
Concentration	1 mg/ml
Observed band	60kD
Human Gene ID	92906
Human Swiss-Prot Number	Q8WVV9
Alternative Names	HNRPLL; SRRF; BLOCK24; Heterogeneous nuclear ribonucleoprotein L-like; hnRNPLL; Stromal RNA-regulating factor
Background	heterogeneous nuclear ribonucleoprotein L like(HNRNPLL) Homo sapiens HNRNPLL is a master regulator of activation-induced alternative



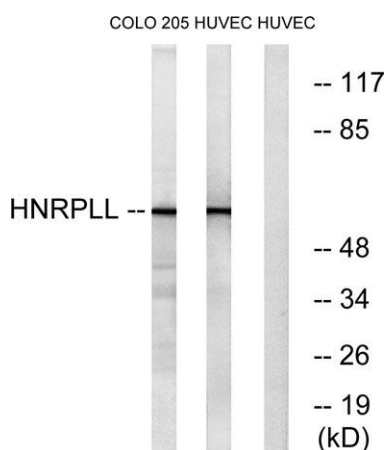
splicing in T cells. In particular, it alters splicing of CD45 (PTPRC; MIM 151460), a tyrosine phosphatase essential for T-cell development and activation (Oberdoerffer et al., 2008 [PubMed 18669861]).[supplied by OMIM, Aug 2008],



Western Blot analysis of various cells using hnRNP LL Polyclonal Antibody cells nucleus extracted by Minute TM Cytoplasmic and Nuclear Fractionation kit (SC-003, Inventbiotech, MN, USA).



Immunohistochemical analysis of paraffin-embedded Human brain. Antibody was diluted at 1:100(4° overnight). High-pressure and temperature Tris-EDTA, pH8.0 was used for antigen retrieval. Negative contrl (right) obtained from antibody was pre-absorbed by i



Western blot analysis of lysates from HUVEC and COLO cells, using HNRPLL Antibody. The lane on the right is blocked with the synthesized peptide.

