



# HMG-2 rabbit pAb

Cat No.:ES2540

For research use only

## Overview

<b>Product Name</b>	HMG-2 rabbit pAb
<b>Host species</b>	Rabbit
<b>Applications</b>	WB;IHC;IF;ELISA
<b>Species Cross-Reactivity</b>	Human;Mouse;Rat
<b>Recommended dilutions</b>	Western Blot: 1/500 - 1/2000. Immunohistochemistry: 1/100 - 1/300. Immunofluorescence: 1/200 - 1/1000. ELISA: 1/10000. Not yet tested in other applications.
<b>Immunogen</b>	The antiserum was produced against synthesized peptide derived from human HMGB2. AA range:131-180
<b>Specificity</b>	HMG-2 Polyclonal Antibody detects endogenous levels of HMG-2 protein.
<b>Formulation</b>	Liquid in PBS containing 50% glycerol, 0.5% BSA and 0.02% sodium azide.
<b>Storage</b>	Store at -20°C. Avoid repeated freeze-thaw cycles.
<b>Protein Name</b>	High mobility group protein B2
<b>Gene Name</b>	HMGB2
<b>Cellular localization</b>	Nucleus . Chromosome . Cytoplasm . Secreted . In basal state predominantly nuclear. .
<b>Purification</b>	The antibody was affinity-purified from rabbit antiserum by affinity-chromatography using epitope-specific immunogen.
<b>Clonality</b>	Polyclonal
<b>Concentration</b>	1 mg/ml
<b>Observed band</b>	27kD
<b>Human Gene ID</b>	3148
<b>Human Swiss-Prot Number</b>	P26583
<b>Alternative Names</b>	HMGB2; HMG2; High mobility group protein B2; High mobility group protein 2; HMG-2
<b>Background</b>	This gene encodes a member of the non-histone chromosomal high mobility group protein family. The proteins of this family are chromatin-associated

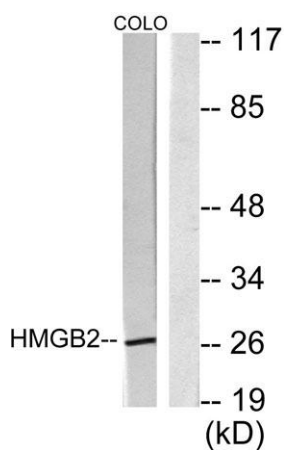




and ubiquitously distributed in the nucleus of higher eukaryotic cells. In vitro studies have demonstrated that this protein is able to efficiently bend DNA and form DNA circles. These studies suggest a role in facilitating cooperative interactions between cis-acting proteins by promoting DNA flexibility. This protein was also reported to be involved in the final ligation step in DNA end-joining processes of DNA double-strand breaks repair and V(D)J recombination. [provided by RefSeq, Jul 2008],



Western Blot analysis of various cells using HMG-2 Polyclonal Antibody

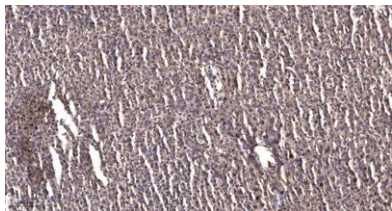


Western blot analysis of lysates from COLO205 cells, using HMGB2 Antibody. The lane on the right is blocked with the synthesized peptide.





**ELK Biotechnology**



Immunohistochemical analysis of paraffin-embedded human liver cancer. 1, Antibody was diluted at 1:200(4° overnight). 2, Tris-EDTA,pH9.0 was used for antigen retrieval. 3,Secondary antibody was diluted at 1:200(room temperature, 45min).



+86-27-59760950

[ELKbio@ELKbiotech.com](mailto:ELKbio@ELKbiotech.com)

[www.elkbiotech.com](http://www.elkbiotech.com)

23-2, No.388 Gaoxin 2nd Road,Wuhan East Lake Hi-tech Development Zone, Hubei , P.R.C