



HLA-DO β rabbit pAb

Cat No.:ES2537

For research use only

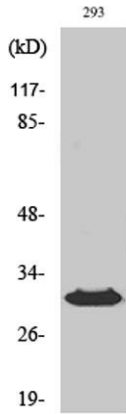
Overview

| | |
|---------------------------------|---|
| Product Name | HLA-DO β rabbit pAb |
| Host species | Rabbit |
| Applications | WB;ELISA |
| Species Cross-Reactivity | Human |
| Recommended dilutions | Western Blot: 1/500 - 1/2000. ELISA: 1/40000. Not yet tested in other applications. |
| Immunogen | The antiserum was produced against synthesized peptide derived from human HLA-DOB. AA range:1-50 |
| Specificity | HLA-DO β Polyclonal Antibody detects endogenous levels of HLA-DO β protein. |
| Formulation | Liquid in PBS containing 50% glycerol, 0.5% BSA and 0.02% sodium azide. |
| Storage | Store at -20°C. Avoid repeated freeze-thaw cycles. |
| Protein Name | HLA class II histocompatibility antigen DO beta chain |
| Gene Name | HLA-DOB |
| Cellular localization | Endosome membrane; Single-pass type I membrane protein. Lysosome membrane; Single-pass type I membrane protein. Complexes with HLA-DM molecule during intracellular transport and in endosomal/lysosomal compartments. Heterotetramerization is necessary to ex |
| Purification | The antibody was affinity-purified from rabbit antiserum by affinity-chromatography using epitope-specific immunogen. |
| Clonality | Polyclonal |
| Concentration | 1 mg/ml |
| Observed band | 30kD |
| Human Gene ID | 3112 |
| Human Swiss-Prot Number | P13765 |
| Alternative Names | HLA-DOB; HLA class II histocompatibility antigen; DO beta chain; MHC class II antigen DOB |
| Background | HLA-DOB belongs to the HLA class II beta chain |

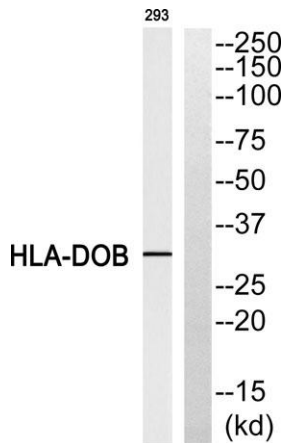




paralogues. This class II molecule is a heterodimer consisting of an alpha (DOA) and a beta chain (DOB), both anchored in the membrane. It is located in intracellular vesicles. DO suppresses peptide loading of MHC class II molecules by inhibiting HLA-DM. Class II molecules are expressed in antigen presenting cells (APC: B lymphocytes, dendritic cells, macrophages). The beta chain is approximately 26-28 kDa and its gene contains 6 exons. Exon one encodes the leader peptide, exons 2 and 3 encode the two extracellular domains, exon 4 encodes the transmembrane domain and exon 5 encodes the cytoplasmic tail. [provided by RefSeq, Jul 2008],



Western Blot analysis of various cells using HLA-DO β Polyclonal Antibody diluted at 1:1000

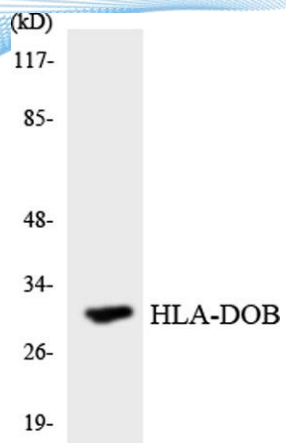


Western blot analysis of HLA-DOB Antibody. The lane on the right is blocked with the HLA-DOB peptide.





ELK Biotechnology



Western blot analysis of the lysates from HeLa cells using HLA-DOB antibody.



+86-27-59760950

ELKbio@ELKbiotech.com

www.elkbiotech.com

23-2, No.388 Gaoxin 2nd Road,Wuhan East Lake Hi-tech Development Zone, Hubei , P.R.C