



Histone deacetylase 7a rabbit pAb

Cat No.:ES2521

For research use only

Overview

Product Name	Histone deacetylase 7a rabbit pAb
Host species	Rabbit
Applications	WB;IHC;IF;ELISA
Species Cross-Reactivity	Human;Mouse
Recommended dilutions	Western Blot: 1/500 - 1/2000. Immunohistochemistry: 1/100 - 1/300. ELISA: 1/10000. Not yet tested in other applications.
Immunogen	The antiserum was produced against synthesized peptide derived from human HDAC7. AA range:901-950
Specificity	Histone deacetylase 7a Polyclonal Antibody detects endogenous levels of Histone deacetylase 7a protein.
Formulation	Liquid in PBS containing 50% glycerol, 0.5% BSA and 0.02% sodium azide.
Storage	Store at -20°C. Avoid repeated freeze-thaw cycles.
Protein Name	Histone deacetylase 7
Gene Name	HDAC7
Cellular localization	Nucleus. Cytoplasm. In the nucleus, it associates with distinct subnuclear dot-like structures. Shuttles between the nucleus and the cytoplasm. Treatment with EDN1 results in shuttling from the nucleus to the perinuclear region. The export to cytoplasm depends on the interaction with the 14-3-3 protein YWHAE and is due to its phosphorylation.
Purification	The antibody was affinity-purified from rabbit antiserum by affinity-chromatography using epitope-specific immunogen.
Clonality	Polyclonal
Concentration	1 mg/ml
Observed band	105kD
Human Gene ID	51564
Human Swiss-Prot Number	Q8WUI4



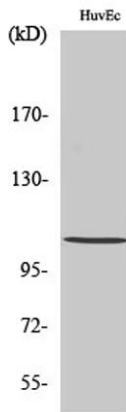


Alternative Names

HDAC7; HDAC7A; Histone deacetylase 7; HD7; Histone deacetylase 7A; HD7a

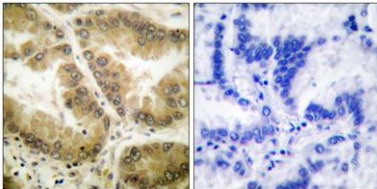
Background

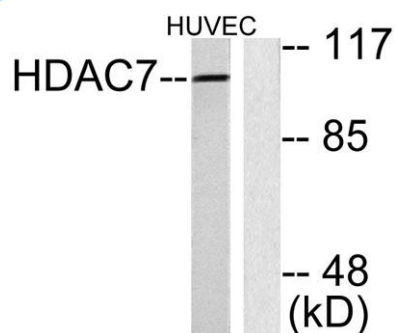
Histones play a critical role in transcriptional regulation, cell cycle progression, and developmental events. Histone acetylation/deacetylation alters chromosome structure and affects transcription factor access to DNA. The protein encoded by this gene has sequence homology to members of the histone deacetylase family. This gene is orthologous to mouse HDAC7 gene whose protein promotes repression mediated via the transcriptional corepressor SMRT. Alternatively spliced transcript variants encoding different isoforms have been found for this gene. [provided by RefSeq, Jul 2008],



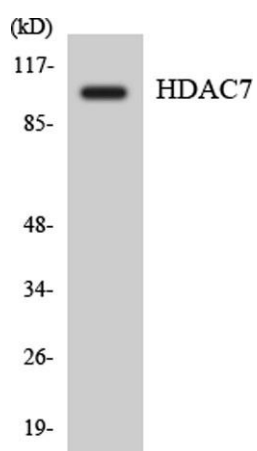
Western Blot analysis of various cells using Histone deacetylase 7a Polyclonal Antibody

Immunohistochemistry analysis of paraffin-embedded human lung carcinoma tissue, using HDAC7 Antibody. The picture on the right is blocked with the synthesized peptide.





Western blot analysis of lysates from HUVEC cells, using HDAC7 Antibody. The lane on the right is blocked with the synthesized peptide.



Western blot analysis of the lysates from COLO205 cells using HDAC7 antibody.

