



# Histone deacetylase 6 rabbit pAb

Cat No.:ES2520

For research use only

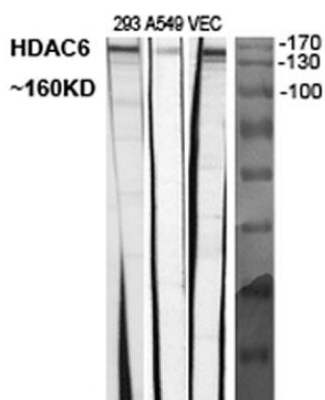
## Overview

<b>Product Name</b>	Histone deacetylase 6 rabbit pAb
<b>Host species</b>	Rabbit
<b>Applications</b>	WB;IHC;IF;ELISA
<b>Species Cross-Reactivity</b>	Human;Mouse
<b>Recommended dilutions</b>	Western Blot: 1/500 - 1/2000. Immunohistochemistry: 1/100 - 1/300. Immunofluorescence: 1/200 - 1/1000. ELISA: 1/20000. Not yet tested in other applications.
<b>Immunogen</b>	The antiserum was produced against synthesized peptide derived from human HDAC6. AA range:1166-1215
<b>Specificity</b>	Histone deacetylase 6 Polyclonal Antibody detects endogenous levels of Histone deacetylase 6 protein.
<b>Formulation</b>	Liquid in PBS containing 50% glycerol, 0.5% BSA and 0.02% sodium azide.
<b>Storage</b>	Store at -20°C. Avoid repeated freeze-thaw cycles.
<b>Protein Name</b>	Histone deacetylase 6
<b>Gene Name</b>	HDAC6
<b>Cellular localization</b>	Cytoplasm . Cytoplasm, cytoskeleton . Nucleus . Perikaryon . Cell projection, dendrite . Cell projection, axon . It is mainly cytoplasmic, where it is associated with microtubules. .
<b>Purification</b>	The antibody was affinity-purified from rabbit antiserum by affinity-chromatography using epitope-specific immunogen.
<b>Clonality</b>	Polyclonal
<b>Concentration</b>	1 mg/ml
<b>Observed band</b>	135kD
<b>Human Gene ID</b>	10013
<b>Human Swiss-Prot Number</b>	Q9UBN7
<b>Alternative Names</b>	HDAC6; KIAA0901; JM21; Histone deacetylase 6; HD6
<b>Background</b>	Histones play a critical role in transcriptional

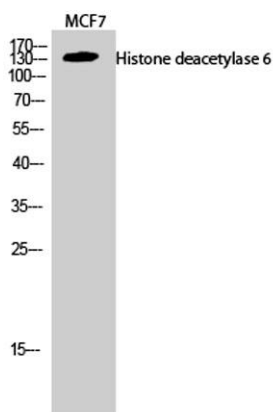




regulation, cell cycle progression, and developmental events. Histone acetylation/deacetylation alters chromosome structure and affects transcription factor access to DNA. The protein encoded by this gene belongs to class II of the histone deacetylase/acuc/apha family. It contains an internal duplication of two catalytic domains which appear to function independently of each other. This protein possesses histone deacetylase activity and represses transcription. [provided by RefSeq, Jul 2008],



Western Blot analysis of various cells using Histone deacetylase 6 Polyclonal Antibody diluted at 1:2000

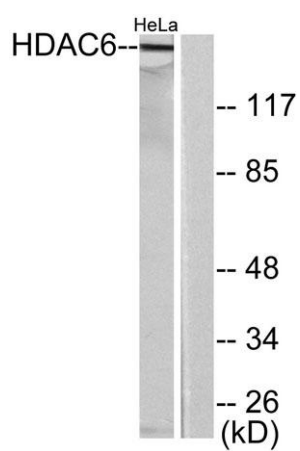
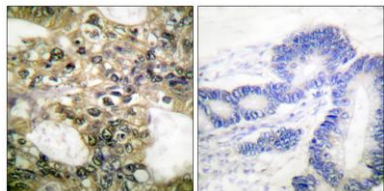


Western Blot analysis of MCF7 cells using Histone deacetylase 6 Polyclonal Antibody diluted at 1:2000





Immunohistochemistry analysis of paraffin-embedded human colon carcinoma tissue, using HDAC6 Antibody. The picture on the right is blocked with the synthesized peptide.



Western blot analysis of lysates from HeLa cells, using HDAC6 Antibody. The lane on the right is blocked with the synthesized peptide.

