



# Hel-N1 rabbit pAb

Cat No.:ES2508

For research use only

## Overview

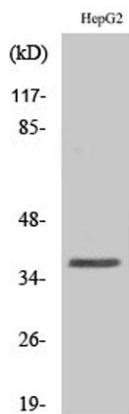
|                                 |   |
|---------------------------------|---|
| <b>Product Name</b>             | Hel-N1 rabbit pAb   |
| <b>Host species</b>             | Rabbit  |
| <b>Applications</b>             | WB;ELISA  |
| <b>Species Cross-Reactivity</b> | Human;Mouse;Rat   |
| <b>Recommended dilutions</b>    | Western Blot: 1/500 - 1/2000. ELISA: 1/20000. Not yet tested in other applications.   |
| <b>Immunogen</b>                | The antiserum was produced against synthesized peptide derived from human ELAVL2. AA range:11-60  |
| <b>Specificity</b>              | Hel-N1 Polyclonal Antibody detects endogenous levels of Hel-N1 protein.   |
| <b>Formulation</b>              | Liquid in PBS containing 50% glycerol, 0.5% BSA and 0.02% sodium azide.   |
| <b>Storage</b>                  | Store at -20°C. Avoid repeated freeze-thaw cycles.  |
| <b>Protein Name</b>             | ELAV-like protein 2   |
| <b>Gene Name</b>                | ELAVL2  |
| <b>Cellular localization</b>    | nucleoplasm,  |
| <b>Purification</b>             | The antibody was affinity-purified from rabbit antiserum by affinity-chromatography using epitope-specific immunogen.   |
| <b>Clonality</b>                | Polyclonal  |
| <b>Concentration</b>            | 1 mg/ml   |
| <b>Observed band</b>            | 38kD  |
| <b>Human Gene ID</b>            | 1993  |
| <b>Human Swiss-Prot Number</b>  | Q12926  |
| <b>Alternative Names</b>        | ELAVL2; HUB; ELAV-like protein 2; ELAV-like neuronal protein 1; Hu-antigen B; HuB; Nervous system-specific RNA-binding protein Hel-N1   |
| <b>Background</b>               | ELAV like RNA binding protein 2(ELAVL2) Homo sapiens The protein encoded by this gene is a neural-specific RNA-binding protein that is known to bind to several 3' UTRs, including its own and also that of FOS and ID. The encoded protein may |





recognize a GAAA motif in the RNA. Three transcript variants encoding two different isoforms have been found for this gene. [provided by RefSeq, Jan 2010],

Western Blot analysis of various cells using Hel-N1 Polyclonal Antibody



Western blot analysis of lysates from HepG2 and Jurkat cells, using ELAVL2 Antibody. The lane on the right is blocked with the synthesized peptide.

