



HDAC8 rabbit pAb

Cat No.:ES2506

For research use only

Overview

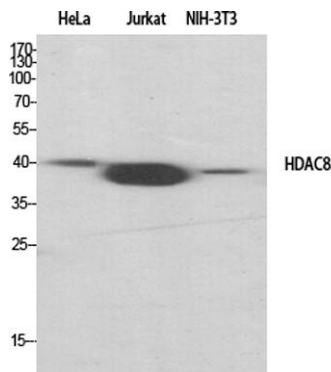
Product Name	HDAC8 rabbit pAb
Host species	Rabbit
Applications	WB;IHC;IF;ELISA
Species Cross-Reactivity	Human;Mouse;Rat;Monkey
Recommended dilutions	Western Blot: 1/500 - 1/2000. Immunohistochemistry: 1/100 - 1/300. ELISA: 1/20000. Not yet tested in other applications.
Immunogen	The antiserum was produced against synthesized peptide derived from human HDAC8. AA range:5-54
Specificity	HDAC8 Polyclonal Antibody detects endogenous levels of HDAC8 protein.
Formulation	Liquid in PBS containing 50% glycerol, 0.5% BSA and 0.02% sodium azide.
Storage	Store at -20°C. Avoid repeated freeze-thaw cycles.
Protein Name	Histone deacetylase 8
Gene Name	HDAC8
Cellular localization	Nucleus . Chromosome . Cytoplasm . Excluded from the nucleoli (PubMed:10748112). Found in the cytoplasm of cells showing smooth muscle differentiation (PubMed:15772115, PubMed:16538051). .
Purification	The antibody was affinity-purified from rabbit antiserum by affinity-chromatography using epitope-specific immunogen.
Clonality	Polyclonal
Concentration	1 mg/ml
Observed band	42kD
Human Gene ID	55869
Human Swiss-Prot Number	Q9BY41
Alternative Names	HDAC8; HDACL1; CDA07; Histone deacetylase 8; HD8
Background	Histones play a critical role in transcriptional regulation, cell cycle progression, and



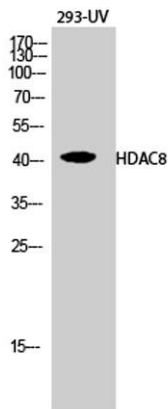


developmental events. Histone acetylation/deacetylation alters chromosome structure and affects transcription factor access to DNA. The protein encoded by this gene belongs to class I of the histone deacetylase family. It catalyzes the deacetylation of lysine residues in the histone N-terminal tails and represses transcription in large multiprotein complexes with transcriptional co-repressors. Multiple transcript variants encoding different isoforms have been found for this gene. [provided by RefSeq, Oct 2009],

Western Blot analysis of various cells using HDAC8
Polyclonal Antibody diluted at 1:1000

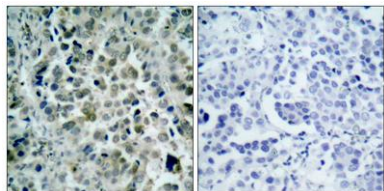


Western Blot analysis of 293-UV cells using HDAC8
Polyclonal Antibody diluted at 1:1000





Immunohistochemistry analysis of paraffin-embedded human lung carcinoma tissue, using HDAC8 Antibody. The picture on the right is blocked with the synthesized peptide.



Western blot analysis of lysates from NIH/3T3, HeLa, and Jurkat cells, using HDAC8 Antibody. The lane on the right is blocked with the synthesized peptide.

