



HDAC6 rabbit pAb

Cat No.:ES2504

For research use only

Overview

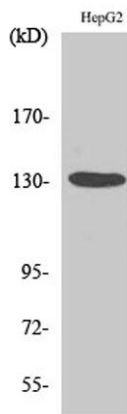
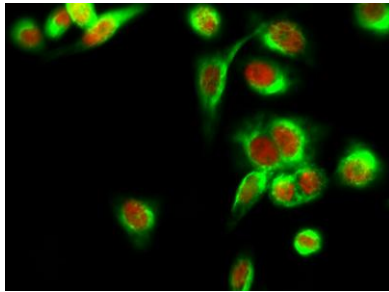
Product Name	HDAC6 rabbit pAb
Host species	Rabbit
Applications	WB;IHC;IF;ELISA
Species Cross-Reactivity	Human;Mouse
Recommended dilutions	Western Blot: 1/500 - 1/2000. Immunohistochemistry: 1/100 - 1/300. Immunofluorescence: 1/200 - 1/1000. ELISA: 1/20000. Not yet tested in other applications.
Immunogen	The antiserum was produced against synthesized peptide derived from human HDAC6. AA range:7-56
Specificity	HDAC6 Polyclonal Antibody detects endogenous levels of HDAC6 protein.
Formulation	Liquid in PBS containing 50% glycerol, 0.5% BSA and 0.02% sodium azide.
Storage	Store at -20°C. Avoid repeated freeze-thaw cycles.
Protein Name	Histone deacetylase 6
Gene Name	HDAC6
Cellular localization	Cytoplasm . Cytoplasm, cytoskeleton . Nucleus . Perikaryon . Cell projection, dendrite . Cell projection, axon . It is mainly cytoplasmic, where it is associated with microtubules. .
Purification	The antibody was affinity-purified from rabbit antiserum by affinity-chromatography using epitope-specific immunogen.
Clonality	Polyclonal
Concentration	1 mg/ml
Observed band	131kD
Human Gene ID	10013
Human Swiss-Prot Number	Q9UBN7
Alternative Names	HDAC6; KIAA0901; JM21; Histone deacetylase 6; HD6
Background	Histones play a critical role in transcriptional regulation, cell cycle progression, and





developmental events. Histone acetylation/deacetylation alters chromosome structure and affects transcription factor access to DNA. The protein encoded by this gene belongs to class II of the histone deacetylase/acuc/apha family. It contains an internal duplication of two catalytic domains which appear to function independently of each other. This protein possesses histone deacetylase activity and represses transcription. [provided by RefSeq, Jul 2008],

Immunofluorescence analysis of Hela cell. 1, HDAC6 Polyclonal Antibody (red) was diluted at 1:200 (4° overnight). GFAP Monoclonal Antibody (5C8) (green) was diluted at 1:200 (4° overnight). 2, Goat Anti Rabbit Alexa Fluor 594 Catalog: RS3611 was diluted at 1:100



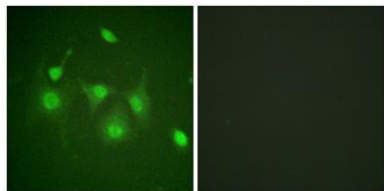
Western Blot analysis of various cells using HDAC6 Polyclonal Antibody diluted at 1:1000



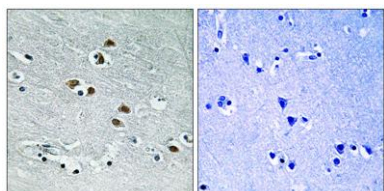


ELK Biotechnology

Immunofluorescence analysis of HepG2 cells, using HDAC6 Antibody. The picture on the right is blocked with the synthesized peptide.



Immunohistochemistry analysis of paraffin-embedded human brain tissue, using HDAC6 Antibody. The picture on the right is blocked with the synthesized peptide.



+86-27-59760950

ELKbio@ELKbiotech.com

www.elkbiotech.com

23-2, No.388 Gaoxin 2nd Road, Wuhan East Lake Hi-tech Development Zone, Hubei, P.R.C