



# HDAC1 rabbit pAb

Cat No.:ES2498

For research use only

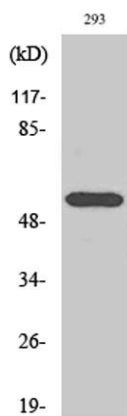
## Overview

<b>Product Name</b>	HDAC1 rabbit pAb
<b>Host species</b>	Rabbit
<b>Applications</b>	WB;IHC;IF;ELISA
<b>Species Cross-Reactivity</b>	Human;Mouse;Rat
<b>Recommended dilutions</b>	Western Blot: 1/500 - 1/2000. Immunohistochemistry: 1/100 - 1/300. ELISA: 1/5000. Not yet tested in other applications.
<b>Immunogen</b>	The antiserum was produced against synthesized peptide derived from human HDAC1. AA range:387-436
<b>Specificity</b>	HDAC1 Polyclonal Antibody detects endogenous levels of HDAC1 protein.
<b>Formulation</b>	Liquid in PBS containing 50% glycerol, 0.5% BSA and 0.02% sodium azide.
<b>Storage</b>	Store at -20°C. Avoid repeated freeze-thaw cycles.
<b>Protein Name</b>	Histone deacetylase 1
<b>Gene Name</b>	HDAC1
<b>Cellular localization</b>	Nucleus .
<b>Purification</b>	The antibody was affinity-purified from rabbit antiserum by affinity-chromatography using epitope-specific immunogen.
<b>Clonality</b>	Polyclonal
<b>Concentration</b>	1 mg/ml
<b>Observed band</b>	55kD
<b>Human Gene ID</b>	3065
<b>Human Swiss-Prot Number</b>	Q13547
<b>Alternative Names</b>	HDAC1; RPD3L1; Histone deacetylase 1; HD1
<b>Background</b>	Histone acetylation and deacetylation, catalyzed by multisubunit complexes, play a key role in the regulation of eukaryotic gene expression. The protein encoded by this gene belongs to the histone deacetylase/acuc/apha family and is a component of the histone deacetylase complex. It also interacts



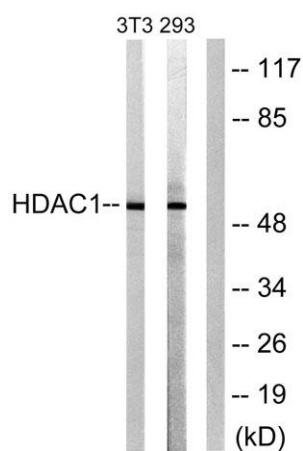
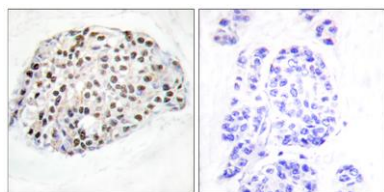


with retinoblastoma tumor-suppressor protein and this complex is a key element in the control of cell proliferation and differentiation. Together with metastasis-associated protein-2, it deacetylates p53 and modulates its effect on cell growth and apoptosis. [provided by RefSeq, Jul 2008],



Western Blot analysis of various cells using HDAC1 Polyclonal Antibody diluted at 1:500

Immunohistochemistry analysis of paraffin-embedded human breast carcinoma tissue, using HDAC1 Antibody. The picture on the right is blocked with the synthesized peptide.

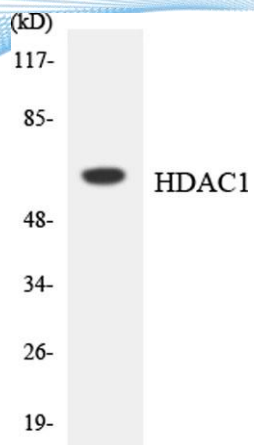


Western blot analysis of lysates from NIH/3T3 cells, using HDAC1 Antibody. The lane on the right is blocked with the synthesized peptide.





**ELK Biotechnology**



Western blot analysis of the lysates from COLO205 cells using HDAC1 antibody.



+86-27-59760950

[ELKbio@ELKbiotech.com](mailto:ELKbio@ELKbiotech.com)

[www.elkbiotech.com](http://www.elkbiotech.com)

23-2, No.388 Gaoxin 2nd Road, Wuhan East Lake Hi-tech Development Zone, Hubei, P.R.C