



GSK3 α / β rabbit pAb

Cat No.:ES2486

For research use only

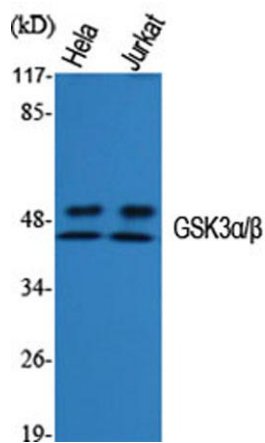
Overview

Product Name	GSK3 α / β rabbit pAb
Host species	Rabbit
Applications	WB;IHC;IF;ELISA
Species Cross-Reactivity	Human;Mouse;Rat;Drosophila;Drosophila
Recommended dilutions	Western Blot: 1/500 - 1/2000. Immunohistochemistry: 1/100 - 1/300. ELISA: 1/20000. Not yet tested in other applications.
Immunogen	The antiserum was produced against synthesized peptide derived from human GSK3 alpha/beta. AA range:246-295
Specificity	GSK3 α / β Polyclonal Antibody detects endogenous levels of GSK3 α / β protein.
Formulation	Liquid in PBS containing 50% glycerol, 0.5% BSA and 0.02% sodium azide.
Storage	Store at -20°C. Avoid repeated freeze-thaw cycles.
Protein Name	Glycogen synthase kinase-3 alpha/beta
Gene Name	GSK3A/GSK3B
Cellular localization	mitochondrion,cytosol,beta-catenin destruction complex,postsynapse,
Purification	The antibody was affinity-purified from rabbit antiserum by affinity-chromatography using epitope-specific immunogen.
Clonality	Polyclonal
Concentration	1 mg/ml
Observed band	51,46kD
Human Gene ID	2931
Human Swiss-Prot Number	P49840/P49841
Alternative Names	GSK3A; Glycogen synthase kinase-3 alpha; GSK-3 alpha; Serine/threonine-protein kinase GSK3A; GSK3B; Glycogen synthase kinase-3 beta; GSK-3 beta; Serine/threonine-protein kinase GSK3B
Background	glycogen synthase kinase 3 alpha(GSK3A) Homo sapiens This gene encodes a multifunctional

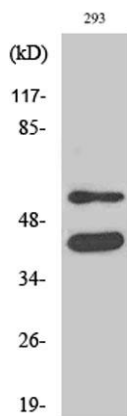




Ser/Thr protein kinase that is implicated in the control of several regulatory proteins including glycogen synthase, and transcription factors, such as JUN. It also plays a role in the WNT and PI3K signaling pathways, as well as regulates the production of beta-amyloid peptides associated with Alzheimer's disease. [provided by RefSeq, Oct 2011],

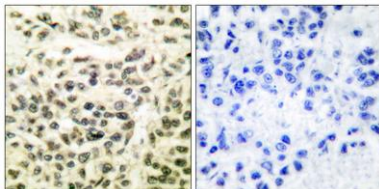


Western Blot analysis of various cells using GSK3 α/β Polyclonal Antibody diluted at 1:1000



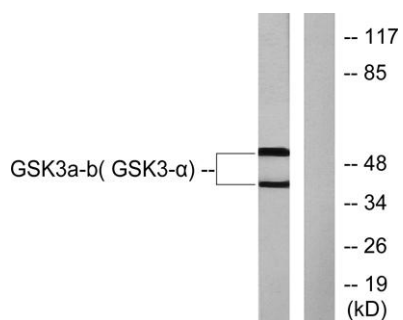
Western Blot analysis of 293 cells using GSK3 α/β Polyclonal Antibody diluted at 1:1000

Immunohistochemistry analysis of paraffin-embedded human breast carcinoma tissue, using GSK3 alpha/beta Antibody. The picture on the right is blocked with the synthesized peptide.





ELK Biotechnology



Western blot analysis of lysates from 293 cells, treated with TNF- α 20ng/ml 30', using GSK3 alpha/beta Antibody. The lane on the right is blocked with the synthesized peptide.



+86-27-59760950

ELKbio@ELKbiotech.com

www.elkbiotech.com

23-2, No.388 Gaoxin 2nd Road,Wuhan East Lake Hi-tech Development Zone, Hubei , P.R.C