



GRK 7 rabbit pAb

Cat No.:ES2481

For research use only

Overview

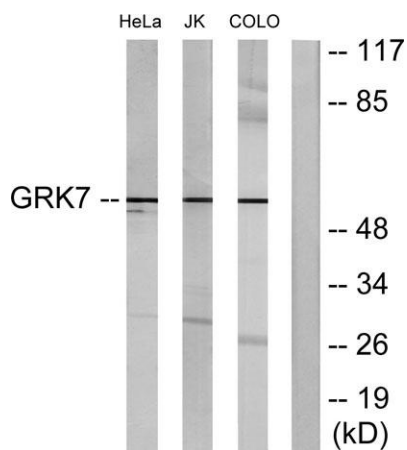
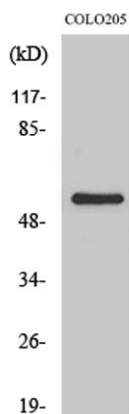
| | |
|---------------------------------|---|
| Product Name | GRK 7 rabbit pAb |
| Host species | Rabbit |
| Applications | WB;IF;ELISA |
| Species Cross-Reactivity | Human;Rat;Mouse; |
| Recommended dilutions | Western Blot: 1/500 - 1/2000. Immunofluorescence: 1/200 - 1/1000. ELISA: 1/20000. Not yet tested in other applications. |
| Immunogen | The antiserum was produced against synthesized peptide derived from human GRK7. AA range:371-420 |
| Specificity | GRK 7 Polyclonal Antibody detects endogenous levels of GRK 7 protein. |
| Formulation | Liquid in PBS containing 50% glycerol, 0.5% BSA and 0.02% sodium azide. |
| Storage | Store at -20°C. Avoid repeated freeze-thaw cycles. |
| Protein Name | G protein-coupled receptor kinase 7 |
| Gene Name | GRK7 |
| Cellular localization | Membrane ; Lipid-anchor . |
| Purification | The antibody was affinity-purified from rabbit antiserum by affinity-chromatography using epitope-specific immunogen. |
| Clonality | Polyclonal |
| Concentration | 1 mg/ml |
| Observed band | 62kD |
| Human Gene ID | 131890 |
| Human Swiss-Prot Number | Q8WTQ7 |
| Alternative Names | GRK7; GPRK7; G protein-coupled receptor kinase 7; G protein-coupled receptor kinase GRK7 |
| Background | This gene encodes a member of the guanine nucleotide-binding protein (G protein)-coupled receptor kinase subfamily of the Ser/Thr protein kinase family. It is specifically expressed in the retina and the encoded protein has been shown to |





phosphorylate cone opsins and initiate their deactivation. [provided by RefSeq, Jul 2008],

Western Blot analysis of various cells using GRK 7 Polyclonal Antibody



Western blot analysis of lysates from COLO205, Jurkat, and HeLa cells, using GRK7 Antibody. The lane on the right is blocked with the synthesized peptide.

