



GRIN1 rabbit pAb

Cat No.:ES2474

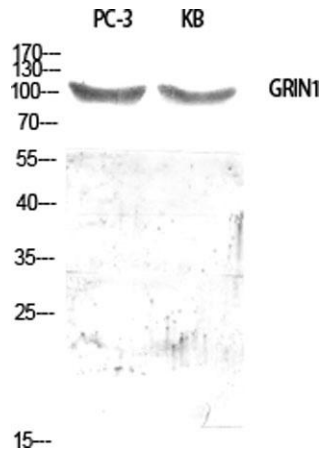
For research use only

Overview

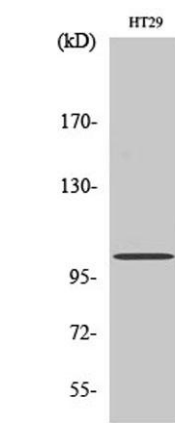
Product Name	GRIN1 rabbit pAb
Host species	Rabbit
Applications	WB;ELISA
Species Cross-Reactivity	Human;Rat;Mouse;
Recommended dilutions	Western Blot: 1/500 - 1/2000. ELISA: 1/40000. Not yet tested in other applications.
Immunogen	The antiserum was produced against synthesized peptide derived from human GPRIN1. AA range:231-280
Specificity	GRIN1 Polyclonal Antibody detects endogenous levels of GRIN1 protein.
Formulation	Liquid in PBS containing 50% glycerol, 0.5% BSA and 0.02% sodium azide.
Storage	Store at -20°C. Avoid repeated freeze-thaw cycles.
Protein Name	G protein-regulated inducer of neurite outgrowth 1
Gene Name	GPRIN1
Cellular localization	Cell membrane ; Lipid-anchor . Cell projection, growth cone . Highly enriched in growth cone. .
Purification	The antibody was affinity-purified from rabbit antiserum by affinity-chromatography using epitope-specific immunogen.
Clonality	Polyclonal
Concentration	1 mg/ml
Observed band	102kD
Human Gene ID	114787
Human Swiss-Prot Number	Q7Z2K8
Alternative Names	GPRIN1; KIAA1893; G protein-regulated inducer of neurite outgrowth 1; GRIN1
Background	function:May be involved in neurite outgrowth.,PTM:Palmitoylation on Cys-999 and/or Cys-1000 is required for membrane targeting.,subcellular location:Highly enriched in growth cone.,subunit:Interacts with activated forms



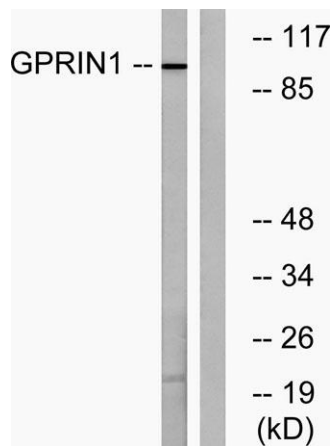
of GNAI1, GNAO1 and GNAZ.,tissue specificity:Widely expressed in the central nervous system, with highest levels in spinal cord.,



Western Blot analysis of various cells using GRIN1 Polyclonal Antibody diluted at 1:500



Western Blot analysis of HT29 cells using GRIN1 Polyclonal Antibody diluted at 1:500



Western blot analysis of lysates from HT-29 cells, using GPRIN1 Antibody. The lane on the right is blocked with the synthesized peptide.

