



# GPR62 rabbit pAb

Cat No.:ES2466

For research use only

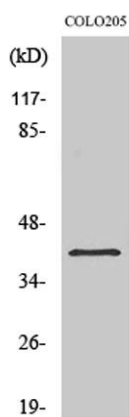
## Overview

<b>Product Name</b>	GPR62 rabbit pAb
<b>Host species</b>	Rabbit
<b>Applications</b>	WB;ELISA
<b>Species Cross-Reactivity</b>	Human;Rat;Mouse;
<b>Recommended dilutions</b>	Western Blot: 1/500 - 1/2000. ELISA: 1/20000. Not yet tested in other applications.
<b>Immunogen</b>	The antiserum was produced against synthesized peptide derived from human GPR62. AA range:181-230
<b>Specificity</b>	GPR62 Polyclonal Antibody detects endogenous levels of GPR62 protein.
<b>Formulation</b>	Liquid in PBS containing 50% glycerol, 0.5% BSA and 0.02% sodium azide.
<b>Storage</b>	Store at -20°C. Avoid repeated freeze-thaw cycles.
<b>Protein Name</b>	Probable G-protein coupled receptor 62
<b>Gene Name</b>	GPR62
<b>Cellular localization</b>	Cell membrane ; Multi-pass membrane protein . Endosome membrane ; Multi-pass membrane protein . Colocalizes with ARRB2 in the endosome (PubMed:28827538) . .
<b>Purification</b>	The antibody was affinity-purified from rabbit antiserum by affinity-chromatography using epitope-specific immunogen.
<b>Clonality</b>	Polyclonal
<b>Concentration</b>	1 mg/ml
<b>Observed band</b>	38kD
<b>Human Gene ID</b>	118442
<b>Human Swiss-Prot Number</b>	Q9BZJ7
<b>Alternative Names</b>	GPR62; Probable G-protein coupled receptor 62; G-protein coupled receptor GPCR8; hGPCR8; G-protein coupled receptor KPG_005
<b>Background</b>	function:Orphan receptor.,similarity:Belongs to the G-protein coupled receptor 1 family.,tissue

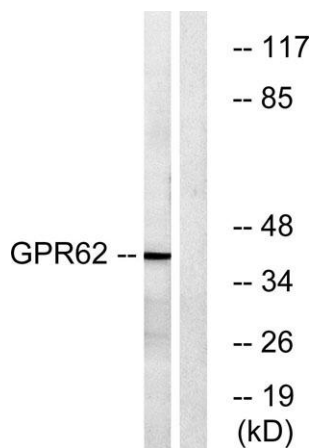




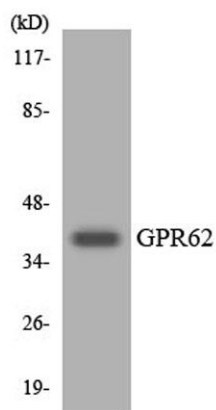
specificity: Expressed in brain; detected in the basal forebrain, frontal cortex, caudate, putamen, thalamus and hippocampus.,



Western Blot analysis of various cells using GPR62 Polyclonal Antibody



Western blot analysis of lysates from COLO cells, using GPR62 Antibody. The lane on the right is blocked with the synthesized peptide.



Western blot analysis of the lysates from Jurkat cells using GPR62 antibody.

