



GPR176 rabbit pAb

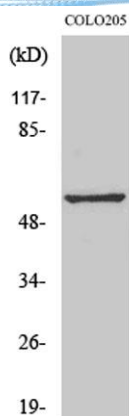
Cat No.:ES2459

For research use only

Overview

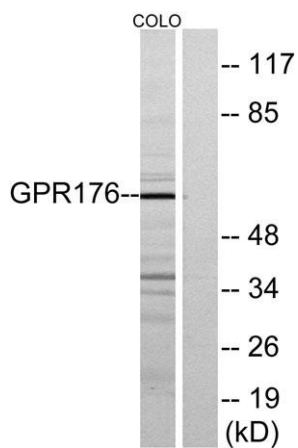
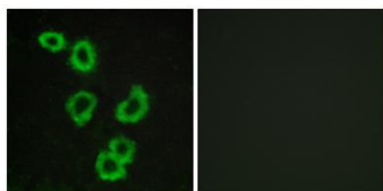
Product Name	GPR176 rabbit pAb
Host species	Rabbit
Applications	WB;IF;ELISA
Species Cross-Reactivity	Human;Mouse;Rat
Recommended dilutions	Western Blot: 1/500 - 1/2000. Immunofluorescence: 1/200 - 1/1000. ELISA: 1/10000. Not yet tested in other applications.
Immunogen	The antiserum was produced against synthesized peptide derived from human GPR176. AA range:466-515
Specificity	GPR176 Polyclonal Antibody detects endogenous levels of GPR176 protein.
Formulation	Liquid in PBS containing 50% glycerol, 0.5% BSA and 0.02% sodium azide.
Storage	Store at -20°C. Avoid repeated freeze-thaw cycles.
Protein Name	Probable G-protein coupled receptor 176
Gene Name	GPR176
Cellular localization	Cell membrane ; Multi-pass membrane protein .
Purification	The antibody was affinity-purified from rabbit antiserum by affinity-chromatography using epitope-specific immunogen.
Clonality	Polyclonal
Concentration	1 mg/ml
Observed band	57kD
Human Gene ID	11245
Human Swiss-Prot Number	Q14439
Alternative Names	GPR176; Probable G-protein coupled receptor 176; HB-954
Background	Members of the G protein-coupled receptor family, such as GPR176, are cell surface receptors involved in responses to hormones, growth factors, and neurotransmitters (Hata et al., 1995 [PubMed 7893747]).[supplied by OMIM, Jul 2008],





Western Blot analysis of various cells using GPR176 Polyclonal Antibody

Immunofluorescence analysis of MCF7 cells, using GPR176 Antibody. The picture on the right is blocked with the synthesized peptide.

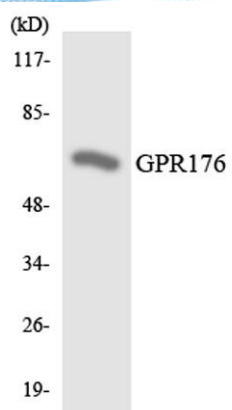


Western blot analysis of lysates from COLO205 cells, using GPR176 Antibody. The lane on the right is blocked with the synthesized peptide.





ELK Biotechnology



Western blot analysis of the lysates from HeLa cells using GPR176 antibody.



+86-27-59760950

ELKbio@ELKbiotech.com

www.elkbiotech.com

23-2, No.388 Gaoxin 2nd Road, Wuhan East Lake Hi-tech Development Zone, Hubei, P.R.C