



GPR110 rabbit pAb

Cat No.:ES2448

For research use only

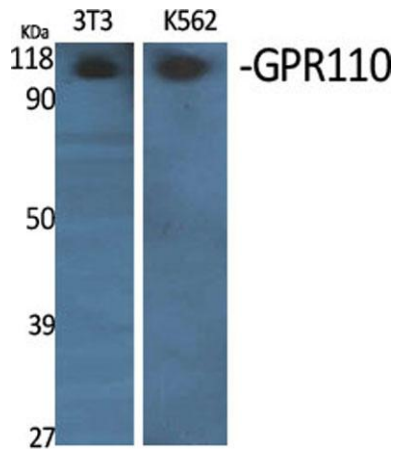
Overview

| | |
|---------------------------------|--|
| Product Name | GPR110 rabbit pAb |
| Host species | Rabbit |
| Applications | WB;IF;ELISA |
| Species Cross-Reactivity | Human;Rat;Mouse; |
| Recommended dilutions | Western Blot: 1/500 - 1/2000. Immunofluorescence: 1/200 - 1/1000. ELISA: 1/40000. Not yet tested in other applications. |
| Immunogen | The antiserum was produced against synthesized peptide derived from human GPR110. AA range:831-880 |
| Specificity | GPR110 Polyclonal Antibody detects endogenous levels of GPR110 protein. |
| Formulation | Liquid in PBS containing 50% glycerol, 0.5% BSA and 0.02% sodium azide. |
| Storage | Store at -20°C. Avoid repeated freeze-thaw cycles. |
| Protein Name | Probable G-protein coupled receptor 110 |
| Gene Name | GPR110 |
| Cellular localization | Cell membrane ; Multi-pass membrane protein ; [Isoform 2]: Secreted . |
| Purification | The antibody was affinity-purified from rabbit antiserum by affinity-chromatography using epitope-specific immunogen. |
| Clonality | Polyclonal |
| Concentration | 1 mg/ml |
| Observed band | 110kD |
| Human Gene ID | 266977 |
| Human Swiss-Prot Number | Q5T601 |
| Alternative Names | GPR110; PGR19; Probable G-protein coupled receptor 110; G-protein coupled receptor KPG_012; G-protein coupled receptor PGR19 |
| Background | function:Orphan receptor.,similarity:Belongs to the G-protein coupled receptor 2 family. LN-TM7 subfamily.,similarity:Contains 1 GPS |

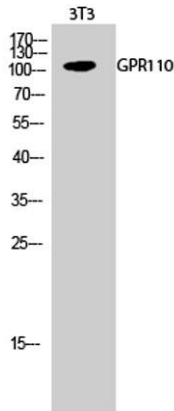




domain.,similarity:Contains 1 SEA domain.,

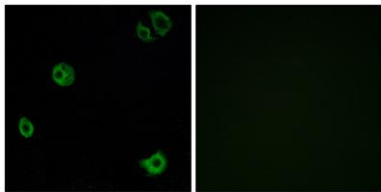


Western Blot analysis of various cells using GPR110 Polyclonal Antibody



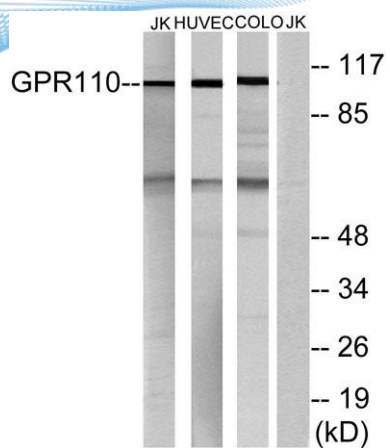
Western Blot analysis of 3T3 cells using GPR110 Polyclonal Antibody

Immunofluorescence analysis of A549 cells, using GPR110 Antibody. The picture on the right is blocked with the synthesized peptide.





ELK Biotechnology



Western blot analysis of lysates from Jurkat, HUVEC, and COLO cells, using GPR110 Antibody. The lane on the right is blocked with the synthesized peptide.



+86-27-59760950

ELKbio@ELKbiotech.com

www.elkbiotech.com

23-2, No.388 Gaoxin 2nd Road, Wuhan East Lake Hi-tech Development Zone, Hubei, P.R.C.