



GPR108 rabbit pAb

Cat No.:ES2447

For research use only

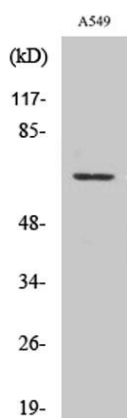
Overview

Product Name	GPR108 rabbit pAb
Host species	Rabbit
Applications	WB;IF;ELISA
Species Cross-Reactivity	Human;Rat;Mouse;
Recommended dilutions	Western Blot: 1/500 - 1/2000. Immunofluorescence: 1/200 - 1/1000. ELISA: 1/5000. Not yet tested in other applications.
Immunogen	The antiserum was produced against synthesized peptide derived from human GPR108. AA range:155-204
Specificity	GPR108 Polyclonal Antibody detects endogenous levels of GPR108 protein.
Formulation	Liquid in PBS containing 50% glycerol, 0.5% BSA and 0.02% sodium azide.
Storage	Store at -20°C. Avoid repeated freeze-thaw cycles.
Protein Name	Protein GPR108
Gene Name	GPR108
Cellular localization	Golgi apparatus, cis-Golgi network membrane ; Multi-pass membrane protein . Golgi apparatus, trans-Golgi network membrane ; Multi-pass membrane protein . Golgi apparatus membrane ; Multi-pass membrane protein . Colocalizes with TLR3, -7, -4, and -9. .
Purification	The antibody was affinity-purified from rabbit antiserum by affinity-chromatography using epitope-specific immunogen.
Clonality	Polyclonal
Concentration	1 mg/ml
Observed band	60kD
Human Gene ID	56927
Human Swiss-Prot Number	Q9NPR9
Alternative Names	GPR108; LUSTR2; Protein GPR108; Lung seven transmembrane receptor 2





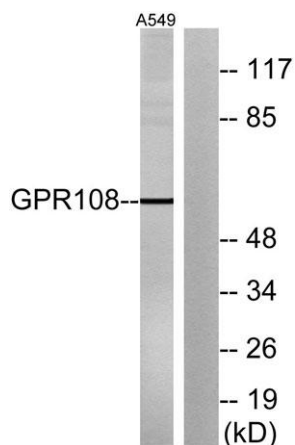
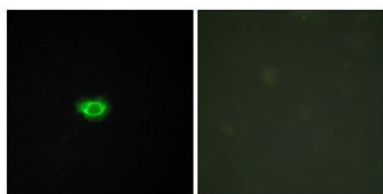
Background



similarity:Belongs to the LU7TM family.,

Western Blot analysis of various cells using GPR108 Polyclonal Antibody

Immunofluorescence analysis of HUVEC cells, using GPR108 Antibody. The picture on the right is blocked with the synthesized peptide.

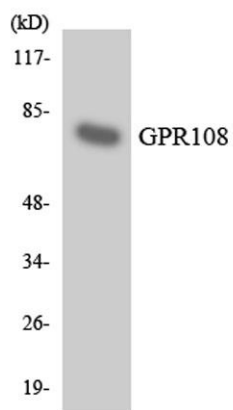


Western blot analysis of lysates from A549 cells, using GPR108 Antibody. The lane on the right is blocked with the synthesized peptide.





ELK Biotechnology



Western blot analysis of the lysates from HT-29 cells using GPR108 antibody.



+86-27-59760950

ELKbio@ELKbiotech.com

www.elkbiotech.com

23-2, No.388 Gaoxin 2nd Road, Wuhan East Lake Hi-tech Development Zone, Hubei, P.R.C