



GIT1 rabbit pAb

Cat No.:ES2426

For research use only

Overview

Product Name	GIT1 rabbit pAb
Host species	Rabbit
Applications	WB;IHC;IF;ELISA
Species Cross-Reactivity	Human;Mouse;Rat
Recommended dilutions	Western Blot: 1/500 - 1/2000. Immunohistochemistry: 1/100 - 1/300. ELISA: 1/20000. Not yet tested in other applications.
Immunogen	The antiserum was produced against synthesized peptide derived from human GIT1. AA range:561-610
Specificity	GIT1 Polyclonal Antibody detects endogenous levels of GIT1 protein.
Formulation	Liquid in PBS containing 50% glycerol, 0.5% BSA and 0.02% sodium azide.
Storage	Store at -20°C. Avoid repeated freeze-thaw cycles.
Protein Name	ARF GTPase-activating protein GIT1
Gene Name	GIT1
Cellular localization	Cytoplasm . Cell junction, synapse . Cell junction, synapse, presynapse . Cell junction, synapse, postsynapse . Cell junction, synapse, postsynaptic density . Cell junction, focal adhesion . Cell projection, lamellipodium . Cytoplasm, cytoskeleton, microtubule organizing center, centrosome . Cytoplasm, cytoskeleton, spindle pole . Cycles between at least 3 distinct intracellular compartments, including focal adhesions, cytosolic complexes, containing at least PXN/paxillin, ARHGEF7 and PAK1, and membrane protrusions. During cell migration, moves from the disassembling adhesions into the cytosol and towards the leading edge. In adherent cells, localizes to adhesions. Recruitment to adhesions may be mediated by RAC and active tyrosine-phosphorylated PXN





Purification

(PubMed:11896197). May be present in bo
The antibody was affinity-purified from rabbit
antiserum by affinity-chromatography using
epitope-specific immunogen.

Clonality

Polyclonal

Concentration

1 mg/ml

Observed band

95kD

Human Gene ID

28964

Human Swiss-Prot Number

Q9Y2X7

Alternative Names

GIT1; ARF GTPase-activating protein GIT1; ARF GAP
GIT1; Cool-associated and tyrosine-phosphorylated
protein 1; CAT-1; CAT1; G protein-coupled receptor
kinase-interactor 1; GRK-interacting protein 1

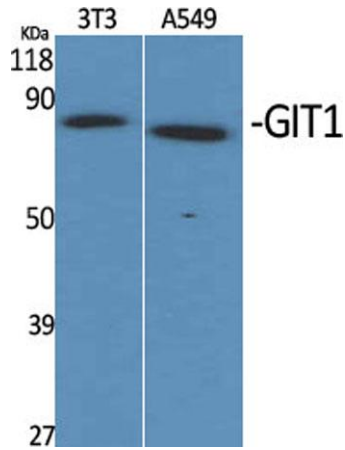
Background

domain:The paxillin-binding domain is masked in the
full-length protein and is regulated by
ARHGEF6.,function:GTPase-activating protein for
the ADP ribosylation factor family. May serve as a
scaffold to bring together molecules to form
signaling modules controlling vesicle trafficking,
adhesion and cytoskeletal organization. Increases
the speed of cell migration, as well as the size and
rate of formation of protrusions, possibly by
targeting PAK1 to adhesions and the leading edge of
lamellipodia. Sequesters inactive
non-tyrosine-phosphorylated paxillin in cytoplasmic
complexes.,PTM:Phosphorylated on tyrosine
residues by PTK2 and SRC in growing fibroblasts.
Tyrosine-phosphorylation is increased following cell
spreading on fibronectin, decreased in cells arrested
in mitosis and increased in the ensuing G1
phase.,similarity:Contains 1 Arf-GAP
domain.,similarity:Contains 3 ANK
repeats.,subcellular location:Cycles between at least
3 distinct intracellular compartments, including focal
adhesions, cytoplasmic complexes and membrane
protrusions. During cell migration, when cells
detach, moves from the adhesions into the
cytoplasmic complexes towards the leading edge,
while, when cells adhere, it is found in
vinculin-containing adhesions. Recruitment to
adhesions may be mediated by active
tyrosine-phosphorylated paxillin.,subunit:Interacts

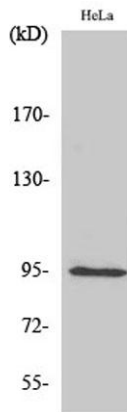




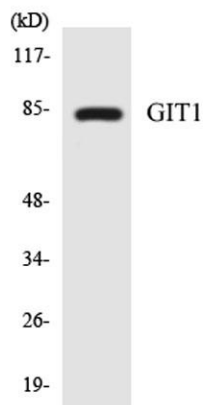
with G protein-coupled receptor kinases: ADRBK1/GRK2, PPFIA1 and PPFIA4. Interacts with ARHGEF6/alpha-PIX, with ARHGEF7/beta-PIX, with PXN/paxillin and with PTK2/FAK (By similarity). Component of cytoplasmic complexes, which also contain PXN, ARHGEF6 and PAK1. Interacts with TGFB1I1.,



Western Blot analysis of various cells using GIT1 Polyclonal Antibody



Western Blot analysis of HepG2 cells using GIT1 Polyclonal Antibody

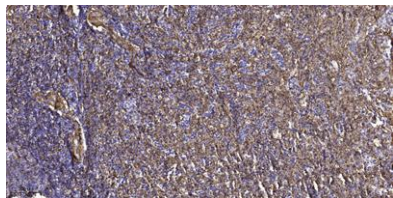


Western blot analysis of the lysates from 293 cells using GIT1 antibody.





ELK Biotechnology



Immunohistochemical analysis of paraffin-embedded human spleen tissue. 1,primary Antibody was diluted at 1:200(4° overnight). 2, Sodium citrate pH 6.0 was used for antigen retrieval(>98°C,20min). 3,Secondary antibody was diluted at 1:200



+86-27-59760950

ELKbio@ELKbiotech.com

www.elkbiotech.com

23-2, No.388 Gaoxin 2nd Road,Wuhan East Lake Hi-tech Development Zone, Hubei , P.R.C