



GIMAP5 rabbit pAb

Cat No.:ES2424

For research use only

Overview

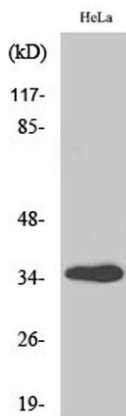
Product Name	GIMAP5 rabbit pAb
Host species	Rabbit
Applications	WB;IHC;IF;ELISA
Species Cross-Reactivity	Human;Rat;Mouse;
Recommended dilutions	Western Blot: 1/500 - 1/2000. Immunohistochemistry: 1/100 - 1/300. ELISA: 1/20000. Not yet tested in other applications.
Immunogen	The antiserum was produced against synthesized peptide derived from human GIMAP5. AA range:231-280
Specificity	GIMAP5 Polyclonal Antibody detects endogenous levels of GIMAP5 protein.
Formulation	Liquid in PBS containing 50% glycerol, 0.5% BSA and 0.02% sodium azide.
Storage	Store at -20°C. Avoid repeated freeze-thaw cycles.
Protein Name	GTPase IMAP family member 5
Gene Name	GIMAP5
Cellular localization	Lysosome membrane ; Single-pass type IV membrane protein . Endosome, multivesicular body membrane ; Single-pass type IV membrane protein . Endosome membrane ; Single-pass type IV membrane protein . The mitochondrial localization originally reported was ob
Purification	The antibody was affinity-purified from rabbit antiserum by affinity-chromatography using epitope-specific immunogen.
Clonality	Polyclonal
Concentration	1 mg/ml
Observed band	35kD
Human Gene ID	55340
Human Swiss-Prot Number	Q96F15
Alternative Names	GIMAP5; IAN4L1; IAN5; IMAP3; GTPase IMAP family member 5; Immunity-associated nucleotide 4-like 1





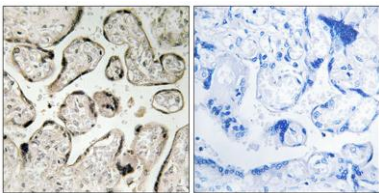
Background

protein; Immunity-associated nucleotide 5 protein; IAN-5; hIAN5; Immunity-associated protein 3
This gene encodes a protein belonging to the GTP-binding superfamily and to the immuno-associated nucleotide (IAN) subfamily of nucleotide-binding proteins. In humans, the IAN subfamily genes are located in a cluster at 7q36.1. This gene encodes an antiapoptotic protein that functions in T-cell survival. Polymorphisms in this gene are associated with systemic lupus erythematosus. Read-through transcription exists between this gene and the neighboring upstream GIMAP1 (GTPase, IMAP family member 1) gene. [provided by RefSeq, Dec 2010],



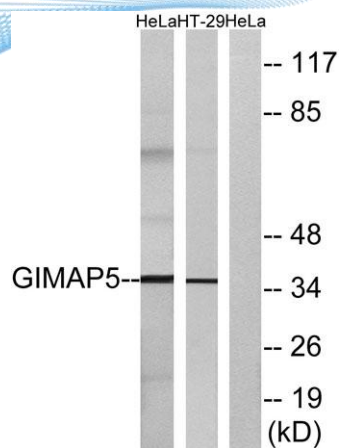
Western Blot analysis of various cells using GIMAP5 Polyclonal Antibody

Immunohistochemistry analysis of paraffin-embedded human placenta tissue, using GIMAP5 Antibody. The picture on the right is blocked with the synthesized peptide.





ELK Biotechnology



Western blot analysis of lysates from HeLa and HT-29 cells, using GIMAP5 Antibody. The lane on the right is blocked with the synthesized peptide.



+86-27-59760950

ELKbio@ELKbiotech.com

www.elkbiotech.com

23-2, No.388 Gaoxin 2nd Road,Wuhan East Lake Hi-tech Development Zone, Hubei , P.R.C