



GCS- β -1 rabbit pAb

Cat No.:ES2417

For research use only

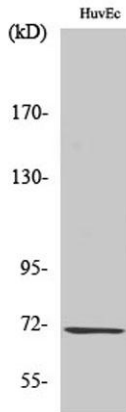
Overview

Product Name	GCS- β -1 rabbit pAb
Host species	Rabbit
Applications	WB;IHC;IF;ELISA
Species Cross-Reactivity	Human;Mouse;Rat
Recommended dilutions	Western Blot: 1/500 - 1/2000. Immunohistochemistry: 1/100 - 1/300. ELISA: 1/5000. Not yet tested in other applications.
Immunogen	The antiserum was produced against synthesized peptide derived from human Guanylate Cyclase beta. AA range:10-59
Specificity	GCS- β -1 Polyclonal Antibody detects endogenous levels of GCS- β -1 protein.
Formulation	Liquid in PBS containing 50% glycerol, 0.5% BSA and 0.02% sodium azide.
Storage	Store at -20°C. Avoid repeated freeze-thaw cycles.
Protein Name	Guanylate cyclase soluble subunit beta-1
Gene Name	GUCY1B3
Cellular localization	Cytoplasm .
Purification	The antibody was affinity-purified from rabbit antiserum by affinity-chromatography using epitope-specific immunogen.
Clonality	Polyclonal
Concentration	1 mg/ml
Observed band	70kD
Human Gene ID	2983
Human Swiss-Prot Number	Q02153
Alternative Names	GUCY1B3; GUC1B3; GUCSB3; GUCY1B1; Guanylate cyclase soluble subunit beta-1; GCS-beta-1; Guanylate cyclase soluble subunit beta-3; GCS-beta-3; Soluble guanylate cyclase small subunit
Background	This gene encodes the beta subunit of the soluble guanylate cyclase (sGC), which catalyzes the conversion of GTP (guanosine triphosphate) to



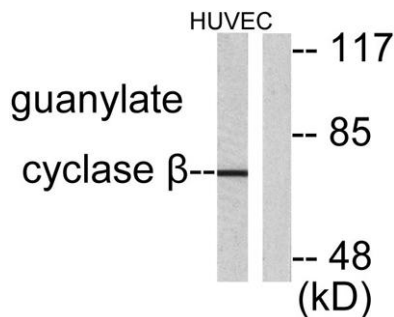
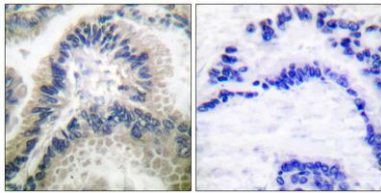


cGMP (cyclic guanosine monophosphate). The encoded protein contains an HNOX domain, which serves as a receptor for ligands such as nitric oxide, oxygen and nitrovasodilator drugs. Alternative splicing results in multiple transcript variants. [provided by RefSeq, May 2014],



Western Blot analysis of various cells using GCS-β-1 Polyclonal Antibody

Immunohistochemistry analysis of paraffin-embedded human lung carcinoma tissue, using Guanylate Cyclase beta Antibody. The picture on the right is blocked with the synthesized peptide.



Western blot analysis of lysates from HUVEC cells, using Guanylate Cyclase beta Antibody. The lane on the right is blocked with the synthesized peptide.

