



# GCSm- $\gamma$ rabbit pAb

Cat No.:ES2415

For research use only

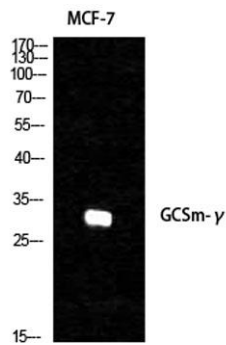
## Overview

<b>Product Name</b>	GCSm- $\gamma$ rabbit pAb
<b>Host species</b>	Rabbit
<b>Applications</b>	WB;IHC;IF;ELISA
<b>Species Cross-Reactivity</b>	Human;Mouse;Rat;Monkey
<b>Recommended dilutions</b>	Western Blot: 1/500 - 1/2000. Immunohistochemistry: 1/100 - 1/300. ELISA: 1/10000. Not yet tested in other applications.
<b>Immunogen</b>	The antiserum was produced against synthesized peptide derived from human GCSm-gamma. AA range:42-91
<b>Specificity</b>	GCSm- $\gamma$ Polyclonal Antibody detects endogenous levels of GCSm- $\gamma$ protein.
<b>Formulation</b>	Liquid in PBS containing 50% glycerol, 0.5% BSA and 0.02% sodium azide.
<b>Storage</b>	Store at -20°C. Avoid repeated freeze-thaw cycles.
<b>Protein Name</b>	Glutamate--cysteine ligase regulatory subunit
<b>Gene Name</b>	GCLM
<b>Cellular localization</b>	cytosol,glutamate-cysteine ligase complex,
<b>Purification</b>	The antibody was affinity-purified from rabbit antiserum by affinity-chromatography using epitope-specific immunogen.
<b>Clonality</b>	Polyclonal
<b>Concentration</b>	1 mg/ml
<b>Observed band</b>	31kD
<b>Human Gene ID</b>	2730
<b>Human Swiss-Prot Number</b>	P48507
<b>Alternative Names</b>	GCLM; GLCLR; Glutamate--cysteine ligase regulatory subunit; GCS light chain; Gamma-ECS regulatory subunit; Gamma-glutamylcysteine synthetase regulatory subunit; Glutamate--cysteine ligase modifier subunit
<b>Background</b>	Glutamate-cysteine ligase, also known as gamma-glutamylcysteine synthetase, is the first rate

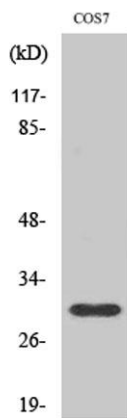




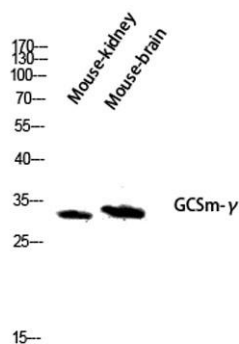
limiting enzyme of glutathione synthesis. The enzyme consists of two subunits, a heavy catalytic subunit and a light regulatory subunit. Gamma glutamylcysteine synthetase deficiency has been implicated in some forms of hemolytic anemia. Alternative splicing results in multiple transcript variants encoding different isoforms. [provided by RefSeq, Apr 2015],



Western Blot analysis of various cells using GCSm- $\gamma$   
Polyclonal Antibody diluted at 1:1000



Western Blot analysis of COS7 cells using GCSm- $\gamma$   
Polyclonal Antibody diluted at 1:1000

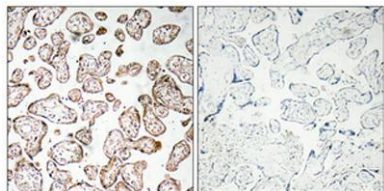


Western blot analysis of Mouse-kidney mouse-brain lysis  
using GCSm- $\gamma$  antibody. Antibody was diluted at 1:1000





**ELK Biotechnology**



Immunohistochemical analysis of paraffin-embedded Human placenta. Antibody was diluted at 1:100(4° overnight). High-pressure and temperature Tris-EDTA,pH8.0 was used for antigen retrieval. Negative contrl (right) obtained from antibody was pre-absorbed by immunogen peptide.



+86-27-59760950

[ELKbio@ELKbiotech.com](mailto:ELKbio@ELKbiotech.com)

[www.elkbiotech.com](http://www.elkbiotech.com)

23-2, No.388 Gaoxin 2nd Road,Wuhan East Lake Hi-tech Development Zone, Hubei , P.R.C