



# GCP5 rabbit pAb

Cat No.:ES2412

For research use only

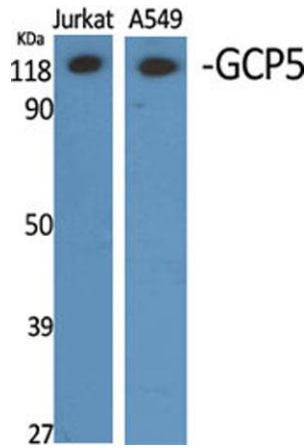
## Overview

<b>Product Name</b>	GCP5 rabbit pAb
<b>Host species</b>	Rabbit
<b>Applications</b>	WB;IHC;IF;ELISA
<b>Species Cross-Reactivity</b>	Human;Mouse;Rat
<b>Recommended dilutions</b>	Western Blot: 1/500 - 1/2000. Immunohistochemistry: 1/100 - 1/300. ELISA: 1/20000. Not yet tested in other applications.
<b>Immunogen</b>	The antiserum was produced against synthesized peptide derived from human TUBGCP5. AA range:741-790
<b>Specificity</b>	GCP5 Polyclonal Antibody detects endogenous levels of GCP5 protein.
<b>Formulation</b>	Liquid in PBS containing 50% glycerol, 0.5% BSA and 0.02% sodium azide.
<b>Storage</b>	Store at -20°C. Avoid repeated freeze-thaw cycles.
<b>Protein Name</b>	Gamma-tubulin complex component 5
<b>Gene Name</b>	TUBGCP5
<b>Cellular localization</b>	Cytoplasm, cytoskeleton, microtubule organizing center, centrosome .
<b>Purification</b>	The antibody was affinity-purified from rabbit antiserum by affinity-chromatography using epitope-specific immunogen.
<b>Clonality</b>	Polyclonal
<b>Concentration</b>	1 mg/ml
<b>Observed band</b>	118kD
<b>Human Gene ID</b>	114791
<b>Human Swiss-Prot Number</b>	Q96RT8
<b>Alternative Names</b>	TUBGCP5; GCP5; KIAA1899; Gamma-tubulin complex component 5; GCP-5
<b>Background</b>	function:Gamma-tubulin complex is necessary for microtubule nucleation at the centrosome.,similarity:Belongs to the GCP family.,subunit:Gamma-tubulin complex is

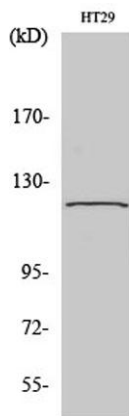




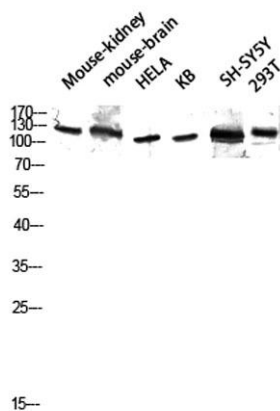
composed of gamma-tubulin, GCP2, GCP3, GCP4, GCP5 and GCP6.,tissue specificity:Widely expressed, with highest levels in heart and skeletal muscle and moderate levels in brain.,



Western Blot analysis of various cells using GCP5 Polyclonal Antibody diluted at 1:2000



Western Blot analysis of 293 cells using GCP5 Polyclonal Antibody diluted at 1:2000

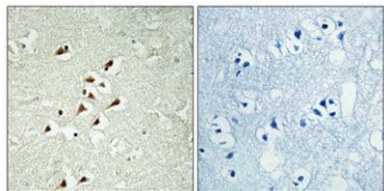


Western blot analysis of Mouse-kidney mouse-brain HELA KB SH-SY5Y 293T lysis using GCP5 antibody. Antibody was diluted at 1:2000





**ELK Biotechnology**



Immunohistochemical analysis of paraffin-embedded Human brain. Antibody was diluted at 1:100(4° overnight). High-pressure and temperature Tris-EDTA,pH8.0 was used for antigen retrieval. Negative contrl (right) obtained from antibody was pre-absorbed by immunogen peptide.



+86-27-59760950

[ELKbio@ELKbiotech.com](mailto:ELKbio@ELKbiotech.com)

[www.elkbiotech.com](http://www.elkbiotech.com)

23-2, No.388 Gaoxin 2nd Road,Wuhan East Lake Hi-tech Development Zone, Hubei , P.R.C