



GABAA R α 4 rabbit pAb

Cat No.:ES2387

For research use only

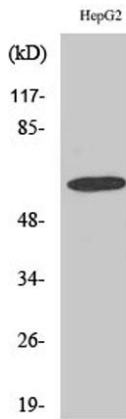
Overview

Product Name	GABAA R α 4 rabbit pAb
Host species	Rabbit
Applications	WB;ELISA
Species Cross-Reactivity	Human;Mouse;Rat
Recommended dilutions	Western Blot: 1/500 - 1/2000. ELISA: 1/40000. Not yet tested in other applications.
Immunogen	The antiserum was produced against synthesized peptide derived from human GABRA4. AA range:81-130
Specificity	GABAA R α 4 Polyclonal Antibody detects endogenous levels of GABAA R α 4 protein.
Formulation	Liquid in PBS containing 50% glycerol, 0.5% BSA and 0.02% sodium azide.
Storage	Store at -20°C. Avoid repeated freeze-thaw cycles.
Protein Name	Gamma-aminobutyric acid receptor subunit alpha-4
Gene Name	GABRA4
Cellular localization	Cell junction, synapse, postsynaptic cell membrane; Multi-pass membrane protein. Cell membrane; Multi-pass membrane protein.
Purification	The antibody was affinity-purified from rabbit antiserum by affinity-chromatography using epitope-specific immunogen.
Clonality	Polyclonal
Concentration	1 mg/ml
Observed band	60kD
Human Gene ID	2557
Human Swiss-Prot Number	P48169
Alternative Names	GABRA4; Gamma-aminobutyric acid receptor subunit alpha-4; GABA(A) receptor subunit alpha-4
Background	Gamma-aminobutyric acid (GABA) is the major inhibitory neurotransmitter in the mammalian brain where it acts at GABA-A receptors, which are ligand-gated chloride channels. Chloride

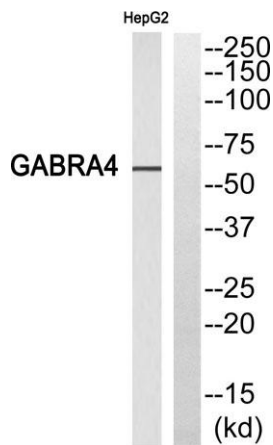




conductance of these channels can be modulated by agents such as benzodiazepines that bind to the GABA-A receptor. At least 16 distinct subunits of GABA-A receptors have been identified. This gene encodes subunit alpha-4, which is involved in the etiology of autism and eventually increases autism risk through interaction with another subunit, gamma-aminobutyric acid receptor beta-1 (GABRB1). Alternatively spliced transcript variants encoding different isoforms have been found in this gene.[provided by RefSeq, Feb 2011],



Western Blot analysis of various cells using GABAA R α 4 Polyclonal Antibody diluted at 1:1000

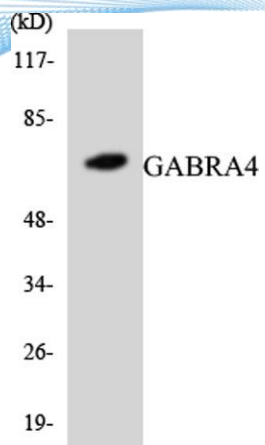


Western blot analysis of GABRA4 Antibody. The lane on the right is blocked with the GABRA4 peptide.





ELK Biotechnology



Western blot analysis of the lysates from COLO205 cells using GABRA4 antibody.



+86-27-59760950

ELKbio@ELKbiotech.com

www.elkbiotech.com

23-2, No.388 Gaoxin 2nd Road,Wuhan East Lake Hi-tech Development Zone, Hubei , P.R.C