



# Fyn rabbit pAb

Cat No.:ES2382

For research use only

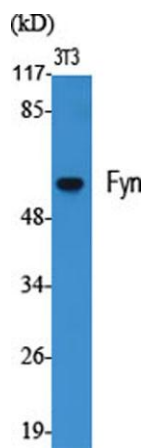
## Overview

|                                 |  |
|---------------------------------|--|
| <b>Product Name</b>             | Fyn rabbit pAb   |
| <b>Host species</b>             | Rabbit   |
| <b>Applications</b>             | WB;IHC;IF;ELISA  |
| <b>Species Cross-Reactivity</b> | Human;Mouse;Rat  |
| <b>Recommended dilutions</b>    | Western Blot: 1/500 - 1/2000. ELISA: 1/5000. Not yet tested in other applications.   |
| <b>Immunogen</b>                | The antiserum was produced against synthesized peptide derived from human Fyn. AA range:488-537  |
| <b>Specificity</b>              | Fyn Polyclonal Antibody detects endogenous levels of Fyn protein.  |
| <b>Formulation</b>              | Liquid in PBS containing 50% glycerol, 0.5% BSA and 0.02% sodium azide.  |
| <b>Storage</b>                  | Store at -20°C. Avoid repeated freeze-thaw cycles.   |
| <b>Protein Name</b>             | Tyrosine-protein kinase Fyn  |
| <b>Gene Name</b>                | FYN  |
| <b>Cellular localization</b>    | Cytoplasm. Nucleus. Cell membrane. Present and active in lipid rafts. Palmitoylation is crucial for proper trafficking.  |
| <b>Purification</b>             | The antibody was affinity-purified from rabbit antiserum by affinity-chromatography using epitope-specific immunogen.  |
| <b>Clonality</b>                | Polyclonal   |
| <b>Concentration</b>            | 1 mg/ml  |
| <b>Observed band</b>            | 60kD   |
| <b>Human Gene ID</b>            | 2534   |
| <b>Human Swiss-Prot Number</b>  | P06241   |
| <b>Alternative Names</b>        | FYN; Tyrosine-protein kinase Fyn; Proto-oncogene Syn; Proto-oncogene c-Fyn; Src-like kinase; SLK; p59-Fyn  |
| <b>Background</b>               | This gene is a member of the protein-tyrosine kinase oncogene family. It encodes a membrane-associated tyrosine kinase that has been implicated in the control of cell growth. The protein associates with |

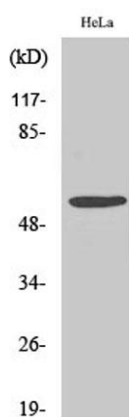




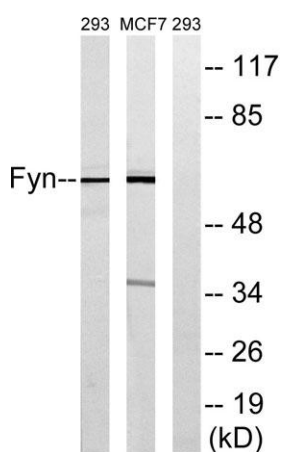
the p85 subunit of phosphatidylinositol 3-kinase and interacts with the fyn-binding protein. Alternatively spliced transcript variants encoding distinct isoforms exist. [provided by RefSeq, Jul 2008],



Western Blot analysis of various cells using Fyn Polyclonal Antibody diluted at 1:2000



Western Blot analysis of COLO205 cells using Fyn Polyclonal Antibody diluted at 1:2000

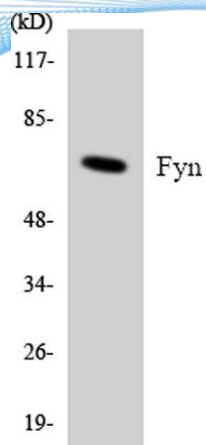


Western blot analysis of lysates from MCF-7 and 293 cells, using Fyn Antibody. The lane on the right is blocked with the synthesized peptide.





**ELK Biotechnology**



Western blot analysis of the lysates from K562 cells using Fyn antibody.



+86-27-59760950

[ELKbio@ELKbiotech.com](mailto:ELKbio@ELKbiotech.com)

[www.elkbiotech.com](http://www.elkbiotech.com)

23-2, No.388 Gaoxin 2nd Road,Wuhan East Lake Hi-tech Development Zone, Hubei , P.R.C