



Fyb rabbit pAb

Cat No.:ES2381

For research use only

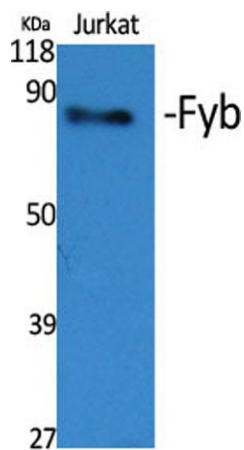
Overview

Product Name	Fyb rabbit pAb
Host species	Rabbit
Applications	WB;ELISA
Species Cross-Reactivity	Human;Mouse;Rat
Recommended dilutions	Western Blot: 1/500 - 1/2000. ELISA: 1/40000. Not yet tested in other applications.
Immunogen	Synthesized peptide derived from Fyb . at AA range: 620-700
Specificity	Fyb Polyclonal Antibody detects endogenous levels of Fyb protein.
Formulation	Liquid in PBS containing 50% glycerol, 0.5% BSA and 0.02% sodium azide.
Storage	Store at -20°C. Avoid repeated freeze-thaw cycles.
Protein Name	FYN-binding protein
Gene Name	FYB
Cellular localization	Cytoplasm . Nucleus . Cell junction . Colocalizes with TMEM47 at cell-cell contacts in podocytes. .
Purification	The antibody was affinity-purified from rabbit antiserum by affinity-chromatography using epitope-specific immunogen.
Clonality	Polyclonal
Concentration	1 mg/ml
Observed band	85kD
Human Gene ID	2533
Human Swiss-Prot Number	O15117
Alternative Names	FYB; SLAP130; FYN-binding protein; Adhesion and degranulation promoting adaptor protein; ADAP; FYB-120/130; p120/p130; FYN-T-binding protein; SLAP-130; SLP-76-associated phosphoprotein
Background	The protein encoded by this gene is an adapter for the FYN protein and LCP2 signaling cascades in T-cells. The encoded protein is involved in platelet activation and controls the expression of

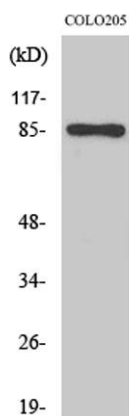




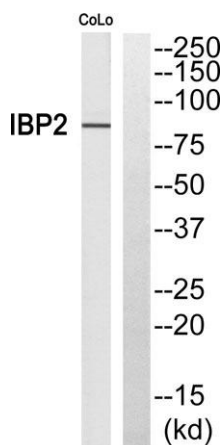
interleukin-2. Three transcript variants encoding different isoforms have been found for this gene. [provided by RefSeq, Jul 2011],



Western Blot analysis of various cells using Fyb Polyclonal Antibody



Western Blot analysis of COLO205 cells using Fyb Polyclonal Antibody



Western blot analysis of Fyb Antibody. The lane on the right is blocked with the Fyb peptide.

