



# FSHR rabbit pAb

Cat No.:ES2378

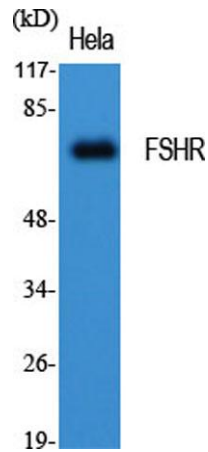
For research use only

## Overview

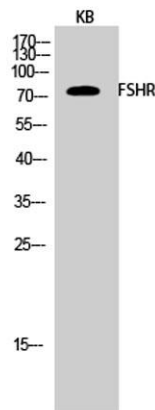
|                          |   |
|--------------------------|---|
| Product Name             | FSHR rabbit pAb   |
| Host species             | Rabbit  |
| Applications             | WB;IHC;IF;ELISA   |
| Species Cross-Reactivity | Human;Mouse;Rat   |
| Recommended dilutions    | IHC-p: 100-300.Western Blot: 1/500 - 1/2000. ELISA: 1/5000. Not yet tested in other applications.   |
| Immunogen                | The antiserum was produced against synthesized peptide derived from human FSHR. AA range:211-260  |
| Specificity              | FSHR Polyclonal Antibody detects endogenous levels of FSHR protein.   |
| Formulation              | Liquid in PBS containing 50% glycerol, 0.5% BSA and 0.02% sodium azide.   |
| Storage                  | Store at -20°C. Avoid repeated freeze-thaw cycles.  |
| Protein Name             | Follicle-stimulating hormone receptor   |
| Gene Name                | FSHR  |
| Cellular localization    | Cell membrane ; Multi-pass membrane protein .   |
| Purification             | The antibody was affinity-purified from rabbit antiserum by affinity-chromatography using epitope-specific immunogen.   |
| Clonality                | Polyclonal  |
| Concentration            | 1 mg/ml   |
| Observed band            | 70kD  |
| Human Gene ID            | 2492  |
| Human Swiss-Prot Number  | P23945  |
| Alternative Names        | FSHR; LGR1; Follicle-stimulating hormone receptor; FSH-R; Follitropin receptor  |
| Background               | The protein encoded by this gene belongs to family 1 of G-protein coupled receptors. It is the receptor for follicle stimulating hormone and functions in gonad development. Mutations in this gene cause ovarian dysgenesis type 1, and also ovarian hyperstimulation syndrome. Alternative splicing |



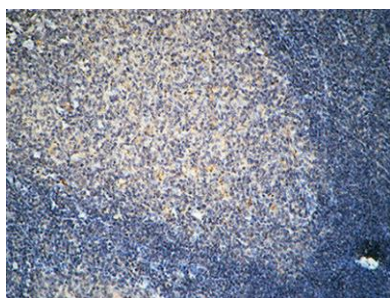
results in multiple transcript variants. [provided by RefSeq, Mar 2010],



Western Blot analysis of various cells using FSHR  
Polyclonal Antibody diluted at 1:1000



Western Blot analysis of KB cells using FSHR Polyclonal  
Antibody diluted at 1:1000

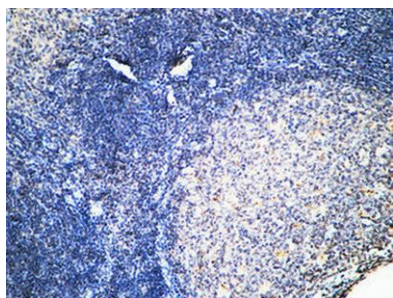


Immunohistochemical analysis of paraffin-embedded Human Amygdala. 1, Antibody was diluted at 1:100(4° overnight). 2, High-pressure and temperature EDTA, pH8.0 was used for antigen retrieval. 3, Secondary antibody was diluted at 1:200(room temperature, 30m





**ELK Biotechnology**



Immunohistochemical analysis of paraffin-embedded Human Amygdala. 1, Antibody was diluted at 1:100(4° overnight). 2, High-pressure and temperature EDTA, pH8.0 was used for antigen retrieval. 3,Secondary antibody was diluted at 1:200(room temperature, 30min).



+86-27-59760950

[ELKbio@ELKbiotech.com](mailto:ELKbio@ELKbiotech.com)

[www.elkbiotech.com](http://www.elkbiotech.com)

23-2, No.388 Gaoxin 2nd Road,Wuhan East Lake Hi-tech Development Zone, Hubei , P.R.C