



# FRS3 rabbit pAb

Cat No.:ES2377

For research use only

## Overview

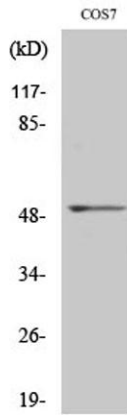
|                                 |   |
|---------------------------------|---|
| <b>Product Name</b>             | FRS3 rabbit pAb   |
| <b>Host species</b>             | Rabbit  |
| <b>Applications</b>             | WB;ELISA  |
| <b>Species Cross-Reactivity</b> | Human;Monkey  |
| <b>Recommended dilutions</b>    | Western Blot: 1/500 - 1/2000. ELISA: 1/40000. Not yet tested in other applications.   |
| <b>Immunogen</b>                | The antiserum was produced against synthesized peptide derived from human FRS3. AA range:191-240  |
| <b>Specificity</b>              | FRS3 Polyclonal Antibody detects endogenous levels of FRS3 protein.   |
| <b>Formulation</b>              | Liquid in PBS containing 50% glycerol, 0.5% BSA and 0.02% sodium azide.   |
| <b>Storage</b>                  | Store at -20°C. Avoid repeated freeze-thaw cycles.  |
| <b>Protein Name</b>             | Fibroblast growth factor receptor substrate 3   |
| <b>Gene Name</b>                | FRS3  |
| <b>Cellular localization</b>    | Membrane; Lipid-anchor.   |
| <b>Purification</b>             | The antibody was affinity-purified from rabbit antiserum by affinity-chromatography using epitope-specific immunogen.   |
| <b>Clonality</b>                | Polyclonal  |
| <b>Concentration</b>            | 1 mg/ml   |
| <b>Observed band</b>            | 54kD  |
| <b>Human Gene ID</b>            | 10817   |
| <b>Human Swiss-Prot Number</b>  | O43559  |
| <b>Alternative Names</b>        | FRS3; Fibroblast growth factor receptor substrate 3; FGFR substrate 3; FGFR-signaling adaptor SNT2; Suc1-associated neurotrophic factor target 2; SNT-2   |
| <b>Background</b>               | This gene encodes a substrate for the fibroblast growth factor receptor. The encoded protein is found in the peripheral plasma membrane and links fibroblast growth factor receptor stimulation to activators of Ras. The encoded protein |





down-regulates extracellular regulated kinase 2 through direct binding. [provided by RefSeq, Jul 2013],

Western Blot analysis of various cells using FRS3 Polyclonal Antibody



Western blot analysis of lysates from COS7 cells, using FRS3 Antibody. The lane on the right is blocked with the synthesized peptide.

