



FoxR1 rabbit pAb

Cat No.:ES2369

For research use only

Overview

Product Name	FoxR1 rabbit pAb
Host species	Rabbit
Applications	WB;IHC;IF;ELISA
Species Cross-Reactivity	Human;Mouse
Recommended dilutions	Western Blot: 1/500 - 1/2000. Immunohistochemistry: 1/100 - 1/300. ELISA: 1/20000. Not yet tested in other applications.
Immunogen	The antiserum was produced against synthesized peptide derived from human FOXR1. AA range:231-280
Specificity	FoxR1 Polyclonal Antibody detects endogenous levels of FoxR1 protein.
Formulation	Liquid in PBS containing 50% glycerol, 0.5% BSA and 0.02% sodium azide.
Storage	Store at -20°C. Avoid repeated freeze-thaw cycles.
Protein Name	Forkhead box protein R1
Gene Name	FOXR1
Cellular localization	Cytoplasm . Cytoplasm, perinuclear region . Located in the cytoplasm of spermatocytes and strongly accumulates at the perinuclear region in elongated spermatids. .
Purification	The antibody was affinity-purified from rabbit antiserum by affinity-chromatography using epitope-specific immunogen.
Clonality	Polyclonal
Concentration	1 mg/ml
Observed band	35kD
Human Gene ID	283150
Human Swiss-Prot Number	Q6PIV2
Alternative Names	FOXR1; FOXN5; DLNB13; Forkhead box protein R1; Forkhead box protein N5
Background	This gene encodes a member of the forkhead box (FOX) family of transcription factors. FOX family



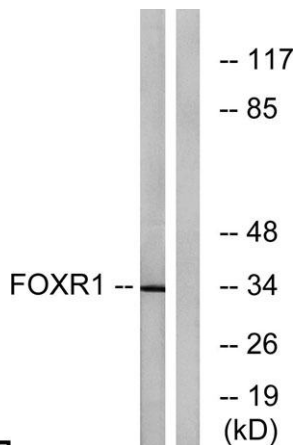
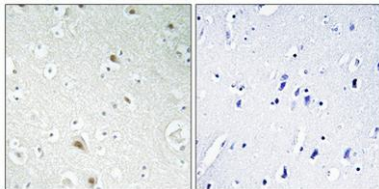


members are monomeric, helix-turn-helix proteins with a core DNA-binding domain of approximately 110 aa. Many FOX transcription factors play roles in determining cell fates during early development. This forkhead box protein lacks the C-terminal basic region found in many other FOX family members. It is located within the 11q23.3 region which is commonly deleted in neuroblastomas. [provided by RefSeq, Jul 2008],



Western Blot analysis of various cells using FoxR1 Polyclonal Antibody cells nucleus extracted by Minute TM Cytoplasmic and Nuclear Fractionation kit (SC-003, Inventbiotech, MN, USA).

Immunohistochemical analysis of paraffin-embedded Human brain. Antibody was diluted at 1:100(4° overnight). High-pressure and temperature Tris-EDTA, pH8.0 was used for antigen retrieval. Negative contrl (right) obtained from antibody was pre-absorbed by i



Western blot analysis of lysates from HeLa cells, using FOX R1 Antibody. The lane on the right is blocked with the synthesized peptide.





ELK Biotechnology



+86-27-59760950

ELKbio@ELKbiotech.com

www.elkbiotech.com

23-2, No.388 Gaoxin 2nd Road,Wuhan East Lake Hi-tech Development Zone, Hubei , P.R.C