



FoxO3A rabbit pAb

Cat No.:ES2366

For research use only

Overview

| | |
|---------------------------------|-----------------------------------------------------------------------------------------------------------------------------------------------------------------------------------------------------------------------------------------------------------------------------------------------------------------------------------------------------------------------------------------------------------------------------------------------------------------------------------------------------------------------------------------------------------------------------------------------------------------------------------------------------------------|
| Product Name | FoxO3A rabbit pAb |
| Host species | Rabbit |
| Applications | WB;IHC;IF;ELISA |
| Species Cross-Reactivity | Human;Mouse;Rat |
| Recommended dilutions | Western Blot: 1/500 - 1/2000. Immunohistochemistry: 1/100 - 1/300. Immunofluorescence: 1/200 - 1/1000. ELISA: 1/20000. Not yet tested in other applications. |
| Immunogen | The antiserum was produced against synthesized peptide derived from human FKHL1. AA range:220-269 |
| Specificity | FoxO3A Polyclonal Antibody detects endogenous levels of FoxO3A protein. |
| Formulation | Liquid in PBS containing 50% glycerol, 0.5% BSA and 0.02% sodium azide. |
| Storage | Store at -20°C. Avoid repeated freeze-thaw cycles. |
| Protein Name | Forkhead box protein O3 |
| Gene Name | FOXO3 |
| Cellular localization | Cytoplasm, cytosol . Nucleus . Mitochondrion matrix . Mitochondrion outer membrane ; Peripheral membrane protein ; Cytoplasmic side . Retention in the cytoplasm contributes to its inactivation (PubMed:10102273, PubMed:15084260, PubMed:16751106). Translocates to the nucleus upon oxidative stress and in the absence of survival factors (PubMed:10102273, PubMed:16751106). Translocates from the cytosol to the nucleus following dephosphorylation in response to autophagy-inducing stimuli (By similarity). Translocates in a AMPK-dependent manner into the mitochondrion in response to metabolic stress (PubMed:23283301, PubMed:29445193). Serum |





Purification

Clonality

Concentration

Observed band

Human Gene ID

Human Swiss-Prot Number

Alternative Names

Background

deprivation increases localization to the nucleus, leading to activate expression of SOX9 and subsequent chondrogenesis (By similarity). .

The antibody was affinity-purified from rabbit antiserum by affinity-chromatography using epitope-specific immunogen.

Polyclonal

1 mg/ml

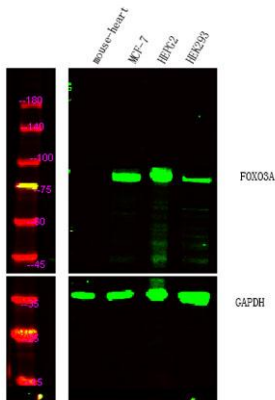
90kD

2309

O43524

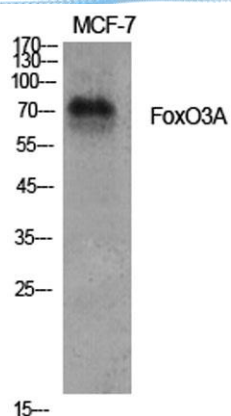
FOXO3; FKHL1; FOXO3A; Forkhead box protein O3; AF6q21 protein; Forkhead in rhabdomyosarcoma-like 1

This gene belongs to the forkhead family of transcription factors which are characterized by a distinct forkhead domain. This gene likely functions as a trigger for apoptosis through expression of genes necessary for cell death. Translocation of this gene with the MLL gene is associated with secondary acute leukemia. Alternatively spliced transcript variants encoding the same protein have been observed. [provided by RefSeq, Jul 2008],



Western Blot analysis of Mouse-heart(negative control), HepG2, MCF7, HEK293 cell lysis using FoxO3A Polyclonal Antibody. Dylight 800, Goat Anti Rabbit IgG Secondary antibody(catalog#:RS23920 was diluted at 1:10000

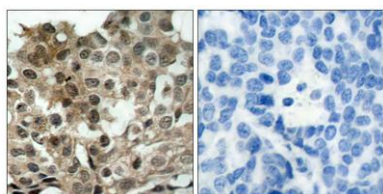




Western Blot analysis of various cells using FoxO3A
Polyclonal Antibody diluted at 1:1000



Western Blot analysis of Jurkat cells using FoxO3A
Polyclonal Antibody diluted at 1:1000



Immunohistochemistry analysis of paraffin-embedded
human breast carcinoma tissue, using FKHL1 Antibody.
The picture on the right is blocked with the synthesized
peptide.

