



FoxD3 rabbit pAb

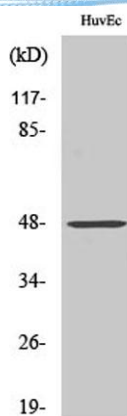
Cat No.:ES2362

For research use only

Overview

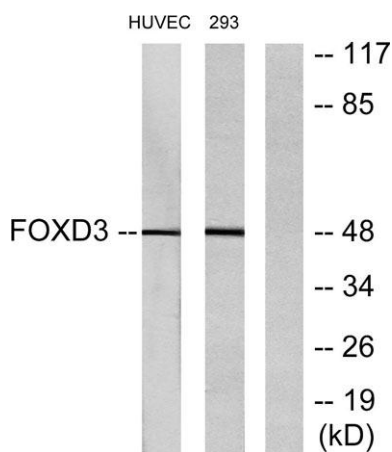
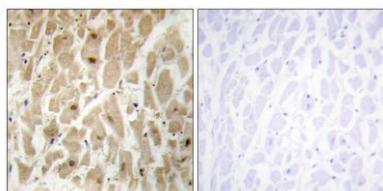
Product Name	FoxD3 rabbit pAb
Host species	Rabbit
Applications	WB;IHC;IF;ELISA
Species Cross-Reactivity	Human;Mouse
Recommended dilutions	Western Blot: 1/500 - 1/2000. Immunohistochemistry: 1/100 - 1/300. ELISA: 1/5000. Not yet tested in other applications.
Immunogen	The antiserum was produced against synthesized peptide derived from human FOXD3. AA range:211-260
Specificity	FoxD3 Polyclonal Antibody detects endogenous levels of FoxD3 protein.
Formulation	Liquid in PBS containing 50% glycerol, 0.5% BSA and 0.02% sodium azide.
Storage	Store at -20°C. Avoid repeated freeze-thaw cycles.
Protein Name	Forkhead box protein D3
Gene Name	FOXD3
Cellular localization	Nucleus .
Purification	The antibody was affinity-purified from rabbit antiserum by affinity-chromatography using epitope-specific immunogen.
Clonality	Polyclonal
Concentration	1 mg/ml
Observed band	48kD
Human Gene ID	27022
Human Swiss-Prot Number	Q9UJU5
Alternative Names	FOXD3; HFH2; Forkhead box protein D3; HNF3/FH transcription factor genesis
Background	This gene belongs to the forkhead family of transcription factors which is characterized by a distinct forkhead domain. Mutations in this gene cause autoimmune susceptibility 1. [provided by RefSeq, Nov 2008],





Western Blot analysis of various cells using FoxD3 Polyclonal Antibody cells nucleus extracted by Minute TM Cytoplasmic and Nuclear Fractionation kit (SC-003, Inventbiotech, MN, USA).

Immunohistochemistry analysis of paraffin-embedded human heart tissue, using FOXD3 Antibody. The picture on the right is blocked with the synthesized peptide.



Western blot analysis of lysates from HUVEC and 293 cells, using FOXD3 Antibody. The lane on the right is blocked with the synthesized peptide.

