



Fgl2 rabbit pAb

Cat No.:ES2341

For research use only

Overview

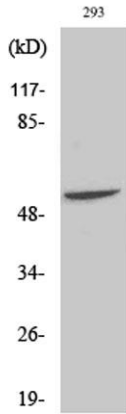
Product Name	Fgl2 rabbit pAb
Host species	Rabbit
Applications	WB;ELISA
Species Cross-Reactivity	Human;Rat;Mouse;
Recommended dilutions	Western Blot: 1/500 - 1/2000. ELISA: 1/10000. Not yet tested in other applications.
Immunogen	The antiserum was produced against synthesized peptide derived from human Fgl2. AA range:38-87
Specificity	Fgl2 Polyclonal Antibody detects endogenous levels of Fgl2 protein.
Formulation	Liquid in PBS containing 50% glycerol, 0.5% BSA and 0.02% sodium azide.
Storage	Store at -20°C. Avoid repeated freeze-thaw cycles.
Protein Name	Fibroleukin
Gene Name	FGL2
Cellular localization	Secreted.
Purification	The antibody was affinity-purified from rabbit antiserum by affinity-chromatography using epitope-specific immunogen.
Clonality	Polyclonal
Concentration	1 mg/ml
Observed band	55kD
Human Gene ID	10875
Human Swiss-Prot Number	Q14314
Alternative Names	FGL2; Fibroleukin; Fibrinogen-like protein 2; pT49
Background	fibrinogen like 2(FGL2) Homo sapiens The protein encoded by this gene is a secreted protein that is similar to the beta- and gamma-chains of fibrinogen. The carboxyl-terminus of the encoded protein consists of the fibrinogen-related domains (FRED). The encoded protein forms a tetrameric complex which is stabilized by interchain disulfide bonds. This protein may play a role in physiologic



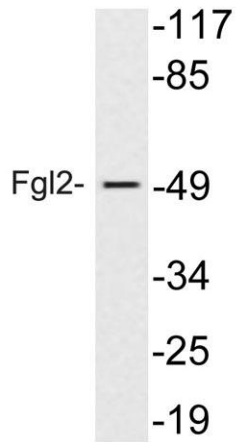


ELK Biotechnology

functions at mucosal sites. [provided by RefSeq, Jul 2008],



Western Blot analysis of various cells using Fgl2 Polyclonal Antibody



Western blot analysis of lysate from 293 cells treated with insulin, using Fgl2 antibody.



+86-27-59760950

ELKbio@ELKbiotech.com

www.elkbiotech.com

23-2, No.388 Gaoxin 2nd Road, Wuhan East Lake Hi-tech Development Zone, Hubei, P.R.C