



FAM80A rabbit pAb

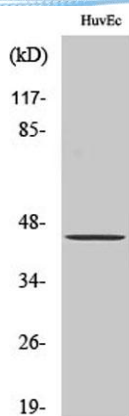
Cat No.:ES2323

For research use only

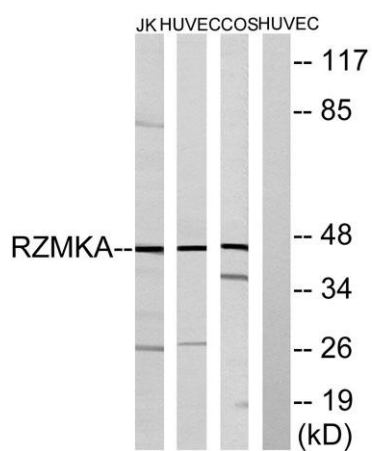
Overview

Product Name	FAM80A rabbit pAb
Host species	Rabbit
Applications	WB;ELISA
Species Cross-Reactivity	Human;Mouse;Monkey
Recommended dilutions	Western Blot: 1/500 - 1/2000. ELISA: 1/20000. Not yet tested in other applications.
Immunogen	The antiserum was produced against synthesized peptide derived from human RIMKA. AA range:112-161
Specificity	FAM80A Polyclonal Antibody detects endogenous levels of FAM80A protein.
Formulation	Liquid in PBS containing 50% glycerol, 0.5% BSA and 0.02% sodium azide.
Storage	Store at -20°C. Avoid repeated freeze-thaw cycles.
Protein Name	N-acetylaspartyl-glutamate synthetase A
Gene Name	RIMKLA
Cellular localization	Cytoplasm .
Purification	The antibody was affinity-purified from rabbit antiserum by affinity-chromatography using epitope-specific immunogen.
Clonality	Polyclonal
Concentration	1 mg/ml
Observed band	43kD
Human Gene ID	284716
Human Swiss-Prot Number	Q8IXN7
Alternative Names	RIMKLA; FAM80A; N-acetylaspartyl-glutamate synthetase A; NAAG synthetase A; NAAGS; Ribosomal protein S6 modification-like protein A cofactor: Binds 2 manganese ions per subunit.,similarity: Belongs to the rimK family.,similarity: Contains 1 ATP-grasp domain.,
Background	





Western Blot analysis of various cells using FAM80A Polyclonal Antibody



Western blot analysis of lysates from HUVEC, COS, and Jurkat cells, using RIMKA Antibody. The lane on the right is blocked with the synthesized peptide.

