



ETAR rabbit pAb

Cat No.:ES2305

For research use only

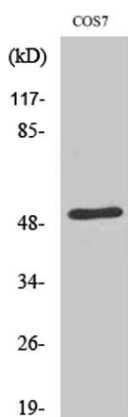
Overview

Product Name	ETAR rabbit pAb
Host species	Rabbit
Applications	WB;IHC;IF;ELISA
Species Cross-Reactivity	Human;Mouse;Monkey
Recommended dilutions	Western Blot: 1/500 - 1/2000. Immunohistochemistry: 1/100 - 1/300. Immunofluorescence: 1/200 - 1/1000. ELISA: 1/20000. Not yet tested in other applications.
Immunogen	The antiserum was produced against synthesized peptide derived from human EDNRA. AA range:378-427
Specificity	ETAR Polyclonal Antibody detects endogenous levels of ETAR protein.
Formulation	Liquid in PBS containing 50% glycerol, 0.5% BSA and 0.02% sodium azide.
Storage	Store at -20°C. Avoid repeated freeze-thaw cycles.
Protein Name	Endothelin-1 receptor
Gene Name	EDNRA
Cellular localization	Cell membrane; Multi-pass membrane protein.
Purification	The antibody was affinity-purified from rabbit antiserum by affinity-chromatography using epitope-specific immunogen.
Clonality	Polyclonal
Concentration	1 mg/ml
Observed band	48kD
Human Gene ID	1909
Human Swiss-Prot Number	P25101
Alternative Names	EDNRA; ETA; ETRA; Endothelin-1 receptor; Endothelin A receptor; ET-A; ETA-R; hET-AR
Background	This gene encodes the receptor for endothelin-1, a peptide that plays a role in potent and long-lasting vasoconstriction. This receptor associates with guanine-nucleotide-binding (G) proteins, and this



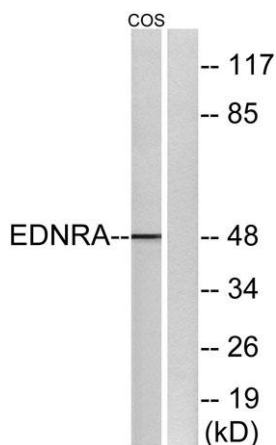
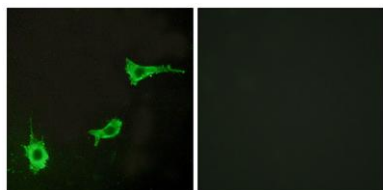


coupling activates a phosphatidylinositol-calcium second messenger system. Polymorphisms in this gene have been linked to migraine headache resistance. Alternative splicing results in multiple transcript variants. [provided by RefSeq, Oct 2009],



Western Blot analysis of various cells using ETAR Polyclonal Antibody cells nucleus extracted by Minute TM Cytoplasmic and Nuclear Fractionation kit (SC-003, Inventbiotech, MN, USA).

Immunofluorescence analysis of LOVO cells, using EDNRA Antibody. The picture on the right is blocked with the synthesized peptide.

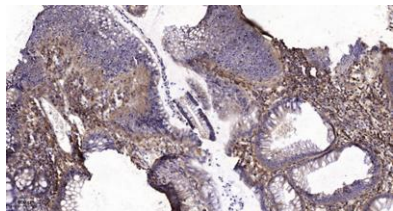


Western blot analysis of lysates from COS7 cells, using EDNRA Antibody. The lane on the right is blocked with the synthesized peptide.





ELK Biotechnology



Immunohistochemical analysis of paraffin-embedded human colon cancer. 1, Tris-EDTA, pH9.0 was used for antigen retrieval. 2 Antibody was diluted at 1:200(4° overnight).3,Secondary antibody was diluted at 1:200(room temperature, 45min).



+86-27-59760950

ELKbio@ELKbiotech.com

www.elkbiotech.com

23-2, No.388 Gaoxin 2nd Road,Wuhan East Lake Hi-tech Development Zone, Hubei , P.R.C