



Epsin 1 rabbit pAb

Cat No.:ES2284

For research use only

Overview

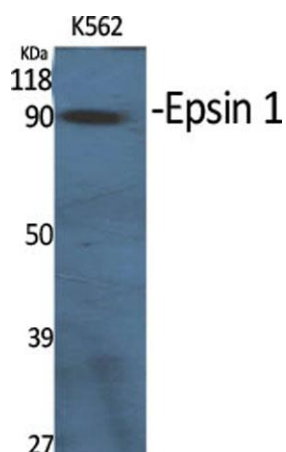
| | |
|--------------------------|---|
| Product Name | Epsin 1 rabbit pAb |
| Host species | Rabbit |
| Applications | WB;ELISA |
| Species Cross-Reactivity | Human;Mouse;Rat |
| Recommended dilutions | Western Blot: 1/500 - 1/2000. ELISA: 1/40000. Not yet tested in other applications. |
| Immunogen | Synthesized peptide derived from Epsin 1 . at AA range: 140-220 |
| Specificity | Epsin 1 Polyclonal Antibody detects endogenous levels of Epsin 1 protein. |
| Formulation | Liquid in PBS containing 50% glycerol, 0.5% BSA and 0.02% sodium azide. |
| Storage | Store at -20°C. Avoid repeated freeze-thaw cycles. |
| Protein Name | Epsin-1 |
| Gene Name | EPN1 |
| Cellular localization | Cytoplasm . Cell membrane ; Peripheral membrane protein . Nucleus . Membrane, clathrin-coated pit . Associated with the cytoplasmic membrane at sites where clathrin-coated pits are forming. Colocalizes with clathrin and AP-2 in a punctate pattern on the p |
| Purification | The antibody was affinity-purified from rabbit antiserum by affinity-chromatography using epitope-specific immunogen. |
| Clonality | Polyclonal |
| Concentration | 1 mg/ml |
| Observed band | 85kD |
| Human Gene ID | 29924 |
| Human Swiss-Prot Number | Q9Y6I3 |
| Alternative Names | EPN1; Epsin-1; EH domain-binding mitotic phosphoprotein; EPS-15-interacting protein 1 |
| Background | This gene encodes a member of the epsin protein family. The encoded protein binds clathrin and is |





involved in the endocytosis of clathrin-coated vesicles. Loss of function of this gene is associated with reduced tumor growth and progression in certain cancer types. [provided by RefSeq, Mar 2016],

Western Blot analysis of various cells using Epsin 1
Polyclonal Antibody diluted at 1:1000



Western Blot analysis of MOuse-brain cells using Epsin 1
Polyclonal Antibody diluted at 1:1000

