



Ephrin-A4 rabbit pAb

Cat No.:ES2278

For research use only

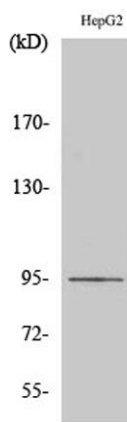
Overview

Product Name	Ephrin-A4 rabbit pAb
Host species	Rabbit
Applications	WB;ELISA
Species Cross-Reactivity	Human;Mouse
Recommended dilutions	Western Blot: 1/500 - 1/2000. ELISA: 1/40000. Not yet tested in other applications.
Immunogen	The antiserum was produced against synthesized peptide derived from human EFNA4. AA range:131-180
Specificity	Ephrin-A4 Polyclonal Antibody detects endogenous levels of Ephrin-A4 protein.
Formulation	Liquid in PBS containing 50% glycerol, 0.5% BSA and 0.02% sodium azide.
Storage	Store at -20°C. Avoid repeated freeze-thaw cycles.
Protein Name	Ephrin-A4
Gene Name	EFNA4
Cellular localization	[Isoform 1]: Cell membrane; Lipid-anchor, GPI-anchor.; [Isoform 2]: Secreted .
Purification	The antibody was affinity-purified from rabbit antiserum by affinity-chromatography using epitope-specific immunogen.
Clonality	Polyclonal
Concentration	1 mg/ml
Observed band	95kD
Human Gene ID	1945
Human Swiss-Prot Number	P52798
Alternative Names	EFNA4; EPLG4; LERK4; Ephrin-A4; EPH-related receptor tyrosine kinase ligand 4; LERK-4
Background	This gene encodes a member of the ephrin (EPH) family. The ephrins and EPH-related receptors comprise the largest subfamily of receptor protein-tyrosine kinases and have been implicated in mediating developmental events, especially in the

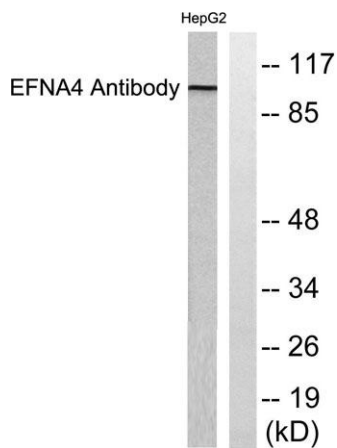




nervous system and in erythropoiesis. Based on their structures and sequence relationships, ephrins are divided into the ephrin-A (EFNA) class, which are anchored to the membrane by a glycosylphosphatidylinositol linkage, and the ephrin-B (EFNB) class, which are transmembrane proteins. This gene encodes an EFNA class ephrin. Three transcript variants that encode distinct proteins have been identified. [provided by RefSeq, Jul 2008],



Western Blot analysis of various cells using Ephrin-A4 Polyclonal Antibody diluted at 1:500



Western blot analysis of lysates from HepG2 cells, using EFNA4 Antibody. The lane on the right is blocked with the synthesized peptide.

