



EphB1/2 rabbit pAb

Cat No.:ES2273

For research use only

Overview

Product Name	EphB1/2 rabbit pAb
Host species	Rabbit
Applications	WB;IHC;IF;ELISA
Species Cross-Reactivity	Human;Mouse;Rat
Recommended dilutions	Western Blot: 1/500 - 1/2000. Immunohistochemistry: 1/100 - 1/300. Immunofluorescence: 1/200 - 1/1000. ELISA: 1/40000. Not yet tested in other applications.
Immunogen	The antiserum was produced against synthesized peptide derived from human EPHB1/2. AA range:561-610
Specificity	EphB1/2 Polyclonal Antibody detects endogenous levels of EphB1/2 protein.
Formulation	Liquid in PBS containing 50% glycerol, 0.5% BSA and 0.02% sodium azide.
Storage	Store at -20°C. Avoid repeated freeze-thaw cycles.
Protein Name	Ephrin type-B receptor 1/2
Gene Name	EPHB1/EPHB2
Cellular localization	Cell membrane ; Single-pass type I membrane protein . Early endosome membrane . Cell projection, dendrite .
Purification	The antibody was affinity-purified from rabbit antiserum by affinity-chromatography using epitope-specific immunogen.
Clonality	Polyclonal
Concentration	1 mg/ml
Observed band	110kD
Human Gene ID	2047/1969
Human Swiss-Prot Number	P54762/P29323
Alternative Names	EPHB1; ELK; EPHT2; HEK6; NET; Ephrin type-B receptor 1; ELK; EPH tyrosine kinase 2; EPH-like kinase 6; EK6; hEK6; Neuronally-expressed EPH-related tyrosine kinase; NET; Tyrosine-protein

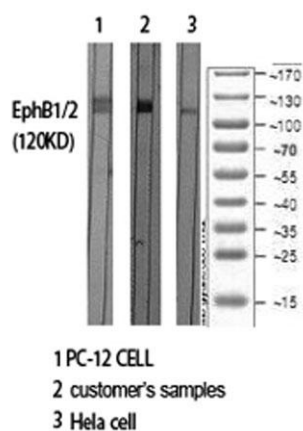




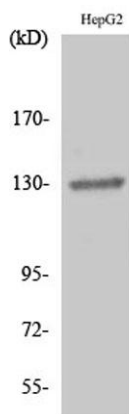
Background

kinase receptor EPH-2; EPHB2; DRT; EPHT3; EPTH3; ERK;

Ephrin receptors and their ligands, the ephrins, mediate numerous developmental processes, particularly in the nervous system. Based on their structures and sequence relationships, ephrins are divided into the ephrin-A (EFNA) class, which are anchored to the membrane by a glycosylphosphatidylinositol linkage, and the ephrin-B (EFNB) class, which are transmembrane proteins. The Eph family of receptors are divided into 2 groups based on the similarity of their extracellular domain sequences and their affinities for binding ephrin-A and ephrin-B ligands. Ephrin receptors make up the largest subgroup of the receptor tyrosine kinase (RTK) family. The protein encoded by this gene is a receptor for ephrin-B family members. [provided by RefSeq, Jul 2008],



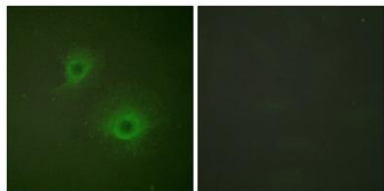
Western Blot analysis of various cells using EphB1/2 Polyclonal Antibody diluted at 1:500



Western Blot analysis of HepG2 cells using EphB1/2 Polyclonal Antibody diluted at 1:500



Immunofluorescence analysis of HUVEC cells, using EPHB1/2 Antibody. The picture on the right is blocked with the synthesized peptide.



Immunohistochemistry analysis of paraffin-embedded human brain tissue, using EPHB1/2 Antibody. The picture on the right is blocked with the synthesized peptide.

