



# Endo180 rabbit pAb

Cat No.:ES2261

For research use only

## Overview

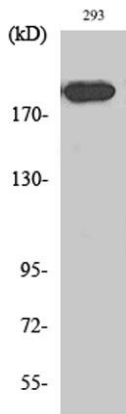
<b>Product Name</b>	Endo180 rabbit pAb
<b>Host species</b>	Rabbit
<b>Applications</b>	WB;IHC;IF;ELISA
<b>Species Cross-Reactivity</b>	Human;Mouse;Rat
<b>Recommended dilutions</b>	Western Blot: 1/500 - 1/2000. Immunohistochemistry: 1/100 - 1/300. Immunofluorescence: 1/200 - 1/1000. ELISA: 1/20000. Not yet tested in other applications.
<b>Immunogen</b>	The antiserum was produced against synthesized peptide derived from human MRC2. AA range:121-170
<b>Specificity</b>	Endo180 Polyclonal Antibody detects endogenous levels of Endo180 protein.
<b>Formulation</b>	Liquid in PBS containing 50% glycerol, 0.5% BSA and 0.02% sodium azide.
<b>Storage</b>	Store at -20°C. Avoid repeated freeze-thaw cycles.
<b>Protein Name</b>	C-type mannose receptor 2
<b>Gene Name</b>	MRC2
<b>Cellular localization</b>	Membrane; Single-pass type I membrane protein.
<b>Purification</b>	The antibody was affinity-purified from rabbit antiserum by affinity-chromatography using epitope-specific immunogen.
<b>Clonality</b>	Polyclonal
<b>Concentration</b>	1 mg/ml
<b>Observed band</b>	167kD
<b>Human Gene ID</b>	9902
<b>Human Swiss-Prot Number</b>	Q9UBG0
<b>Alternative Names</b>	MRC2; CLEC13E; ENDO180; KIAA0709; UPARAP; C-type mannose receptor 2; C-type lectin domain family 13 member E; Endocytic receptor 180; Macrophage mannose receptor 2; Urokinase-type plasminogen activator receptor-associated protein; UPAR-asso





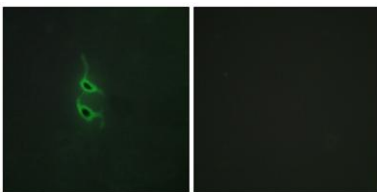
## Background

mannose receptor C type 2(MRC2) Homo sapiens  
This gene encodes a member of the mannose receptor family of proteins that contain a fibronectin type II domain and multiple C-type lectin-like domains. The encoded protein plays a role in extracellular matrix remodeling by mediating the internalization and lysosomal degradation of collagen ligands. Expression of this gene may play a role in the tumorigenesis and metastasis of several malignancies including breast cancer, gliomas and metastatic bone disease. [provided by RefSeq, Feb 2012],



Western Blot analysis of various cells using Endo180  
Polyclonal Antibody diluted at 1:1000

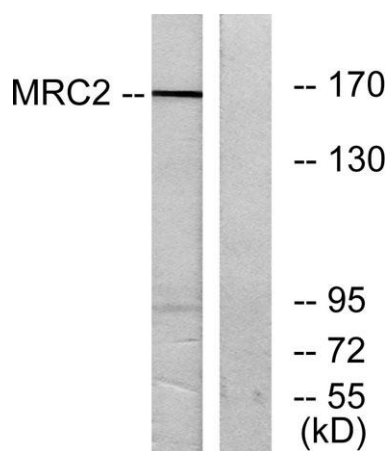
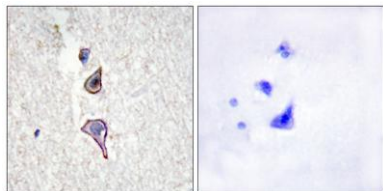
Immunofluorescence analysis of HepG2 cells, using MRC2  
Antibody. The picture on the right is blocked with the  
synthesized peptide.





**ELK Biotechnology**

Immunohistochemistry analysis of paraffin-embedded human brain tissue, using MRC2 Antibody. The picture on the right is blocked with the synthesized peptide.



Western blot analysis of lysates from 293 cells, using MRC2 Antibody. The lane on the right is blocked with the synthesized peptide.



+86-27-59760950

[ELKbio@ELKbiotech.com](mailto:ELKbio@ELKbiotech.com)

[www.elkbiotech.com](http://www.elkbiotech.com)

23-2, No.388 Gaoxin 2nd Road,Wuhan East Lake Hi-tech Development Zone, Hubei , P.R.C