



ELOVL4 rabbit pAb

Cat No.:ES2255

For research use only

Overview

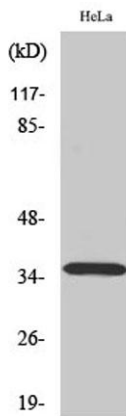
Product Name	ELOVL4 rabbit pAb
Host species	Rabbit
Applications	WB;ELISA
Species Cross-Reactivity	Human;Mouse
Recommended dilutions	Western Blot: 1/500 - 1/2000. ELISA: 1/40000. Not yet tested in other applications.
Immunogen	The antiserum was produced against synthesized peptide derived from human ELOVL4. AA range:41-90
Specificity	ELOVL4 Polyclonal Antibody detects endogenous levels of ELOVL4 protein.
Formulation	Liquid in PBS containing 50% glycerol, 0.5% BSA and 0.02% sodium azide.
Storage	Store at -20°C. Avoid repeated freeze-thaw cycles.
Protein Name	Elongation of very long chain fatty acids protein 4
Gene Name	ELOVL4
Cellular localization	Endoplasmic reticulum membrane ; Multi-pass membrane protein .
Purification	The antibody was affinity-purified from rabbit antiserum by affinity-chromatography using epitope-specific immunogen.
Clonality	Polyclonal
Concentration	1 mg/ml
Observed band	37kD
Human Gene ID	6785
Human Swiss-Prot Number	Q9GZR5
Alternative Names	ELOVL4; Elongation of very long chain fatty acids protein 4; 3-keto acyl-CoA synthase ELOVL4; ELOVL fatty acid elongase 4; ELOVL FA elongase 4
Background	This gene encodes a membrane-bound protein which is a member of the ELO family, proteins which participate in the biosynthesis of fatty acids. Consistent with the expression of the encoded





protein in photoreceptor cells of the retina, mutations and small deletions in this gene are associated with Stargardt-like macular dystrophy (STGD3) and autosomal dominant Stargardt-like macular dystrophy (ADMD), also referred to as autosomal dominant atrophic macular degeneration. [provided by RefSeq, Jul 2008],

Western Blot analysis of various cells using ELOVL4 Polyclonal Antibody diluted at 1:1000



Western blot analysis of lysates from HeLa cells, using ELOVL4 Antibody. The lane on the right is blocked with the synthesized peptide.

