



EKLF/CKLF/UKLF rabbit pAb

Cat No.:ES2250

For research use only

Overview

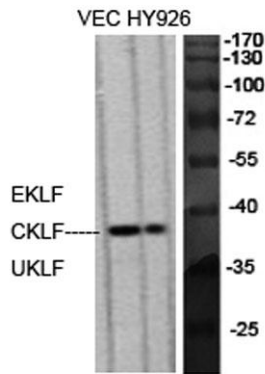
Product Name	EKLF/CKLF/UKLF rabbit pAb
Host species	Rabbit
Applications	WB;IF;ELISA
Species Cross-Reactivity	Human;Mouse;Rat
Recommended dilutions	Western Blot: 1/500 - 1/2000. Immunofluorescence: 1/200 - 1/1000. ELISA: 1/20000. Not yet tested in other applications.
Immunogen	The antiserum was produced against synthesized peptide derived from human KLF. AA range:291-340
Specificity	EKLF/CKLF/UKLF Polyclonal Antibody detects endogenous levels of EKLF/CKLF/UKLF protein.
Formulation	Liquid in PBS containing 50% glycerol, 0.5% BSA and 0.02% sodium azide.
Storage	Store at -20°C. Avoid repeated freeze-thaw cycles.
Protein Name	Krüppel-like factor 1/Krüppel-like factor 5/Krüppel-like factor 7
Gene Name	KLF1/KLF5/KLF7
Cellular localization	Nucleus . Colocalizes with SUMO1 in nuclear speckles. .
Purification	The antibody was affinity-purified from rabbit antiserum by affinity-chromatography using epitope-specific immunogen.
Clonality	Polyclonal
Concentration	1 mg/ml
Observed band	38kD
Human Gene ID	10661/688/8609
Human Swiss-Prot Number	Q13351/Q13887/O75840
Alternative Names	KLF1; EKLF; Krüppel-like factor 1; Erythroid krüppel-like transcription factor; EKLF; KLF5; BTEB2; CKLF; IKLF; Krüppel-like factor 5; Basic transcription element-binding protein 2; BTE-binding protein 2; Colon krüppel-like factor; GC-bo



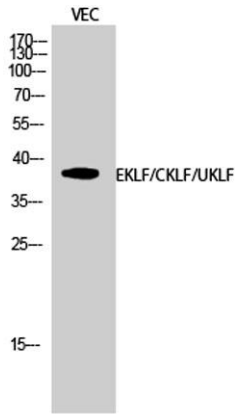


Background

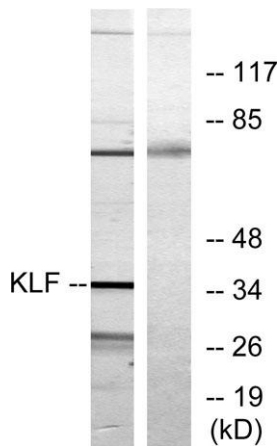
This gene encodes a hematopoietic-specific transcription factor that induces high-level expression of adult beta-globin and other erythroid genes. The zinc-finger protein binds to the DNA sequence CCACACCCT found in the beta hemoglobin promoter. Heterozygous loss-of-function mutations in this gene result in the dominant In(Lu) blood phenotype. [provided by RefSeq, Oct 2009],



Western Blot analysis of various cells using EKLF/CKLF/UKLF Polyclonal Antibody diluted at 1:500 cells nucleus extracted by Minute TM Cytoplasmic and Nuclear Fractionation kit (SC-003, Inventbiotech, MN, USA).



Western Blot analysis of VEC cells using EKLF/CKLF/UKLF Polyclonal Antibody diluted at 1:500 cells nucleus extracted by Minute TM Cytoplasmic and Nuclear Fractionation kit (SC-003, Inventbiotech, MN, USA).

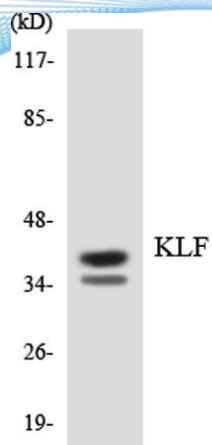


Western blot analysis of lysates from Jurkat cells, treated with serum 20% 15', using KLF Antibody. The lane on the right is blocked with the synthesized peptide.





ELK Biotechnology



Western blot analysis of the lysates from K562 cells using KLF antibody.



+86-27-59760950

ELKbio@ELKbiotech.com

www.elkbiotech.com

23-2, No.388 Gaoxin 2nd Road, Wuhan East Lake Hi-tech Development Zone, Hubei, P.R.C