



# EGFL5 rabbit pAb

Cat No.:ES2233

For research use only

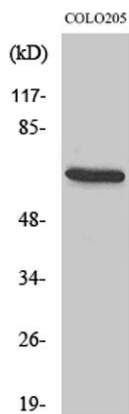
## Overview

<b>Product Name</b>	EGFL5 rabbit pAb
<b>Host species</b>	Rabbit
<b>Applications</b>	WB;ELISA
<b>Species Cross-Reactivity</b>	Human;Mouse;Rat
<b>Recommended dilutions</b>	Western Blot: 1/500 - 1/2000. ELISA: 1/40000. Not yet tested in other applications.
<b>Immunogen</b>	The antiserum was produced against synthesized peptide derived from human MEGF9. AA range:383-432
<b>Specificity</b>	EGFL5 Polyclonal Antibody detects endogenous levels of EGFL5 protein.
<b>Formulation</b>	Liquid in PBS containing 50% glycerol, 0.5% BSA and 0.02% sodium azide.
<b>Storage</b>	Store at -20°C. Avoid repeated freeze-thaw cycles.
<b>Protein Name</b>	Multiple epidermal growth factor-like domains protein 9
<b>Gene Name</b>	MEGF9
<b>Cellular localization</b>	Membrane ; Single-pass type I membrane protein .
<b>Purification</b>	The antibody was affinity-purified from rabbit antiserum by affinity-chromatography using epitope-specific immunogen.
<b>Clonality</b>	Polyclonal
<b>Concentration</b>	1 mg/ml
<b>Observed band</b>	63kD
<b>Human Gene ID</b>	1955
<b>Human Swiss-Prot Number</b>	Q9H1U4
<b>Alternative Names</b>	MEGF9; EGFL5; KIAA0818; Multiple epidermal growth factor-like domains protein 9; Multiple EGF-like domains protein 9; Epidermal growth factor-like protein 5; EGF-like protein 5
<b>Background</b>	caution:It is uncertain whether Met-1 or Met-9 is the initiator.,polymorphism:The poly-Ala stretch (positions 24 to 31) may be polymorphic and varies

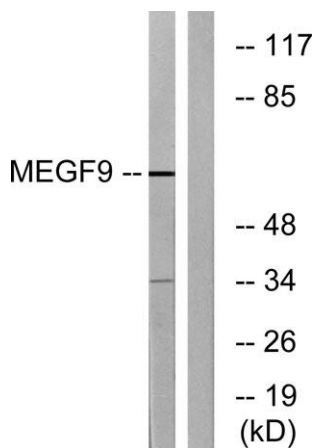




from 6 to 8 Ala residues.,sequence caution:Intron retention.,similarity:Contains 5 laminin EGF-like domains.,



Western Blot analysis of various cells using EGFL5 Polyclonal Antibody diluted at 1:500



Western blot analysis of lysates from COLO cells, using MEGF9 Antibody. The lane on the right is blocked with the synthesized peptide.

