



# EGFL4 rabbit pAb

Cat No.:ES2232

For research use only

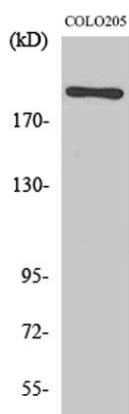
## Overview

<b>Product Name</b>	EGFL4 rabbit pAb
<b>Host species</b>	Rabbit
<b>Applications</b>	WB;IHC;IF;ELISA
<b>Species Cross-Reactivity</b>	Human;Rat;Mouse;
<b>Recommended dilutions</b>	Western Blot: 1/500 - 1/2000. Immunohistochemistry: 1/100 - 1/300. ELISA: 1/20000. Not yet tested in other applications.
<b>Immunogen</b>	The antiserum was produced against synthesized peptide derived from human MEGF8. AA range:1243-1292
<b>Specificity</b>	EGFL4 Polyclonal Antibody detects endogenous levels of EGFL4 protein.
<b>Formulation</b>	Liquid in PBS containing 50% glycerol, 0.5% BSA and 0.02% sodium azide.
<b>Storage</b>	Store at -20°C. Avoid repeated freeze-thaw cycles.
<b>Protein Name</b>	Multiple epidermal growth factor-like domains protein 8
<b>Gene Name</b>	MEGF8
<b>Cellular localization</b>	Membrane ; Single-pass type I membrane protein .
<b>Purification</b>	The antibody was affinity-purified from rabbit antiserum by affinity-chromatography using epitope-specific immunogen.
<b>Clonality</b>	Polyclonal
<b>Concentration</b>	1 mg/ml
<b>Observed band</b>	255kD
<b>Human Gene ID</b>	1954
<b>Human Swiss-Prot Number</b>	Q7Z7M0
<b>Alternative Names</b>	MEGF8; C19orf49; EGFL4; KIAA0817; Multiple epidermal growth factor-like domains protein 8; Multiple EGF-like domains protein 8; Epidermal growth factor-like protein 4; EGF-like protein 4
<b>Background</b>	The protein encoded by this gene is a single-pass type I membrane protein of unknown function that

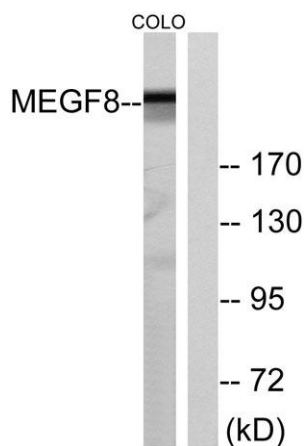




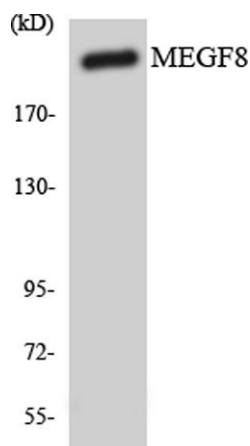
contains several EGF-like domains, Kelch repeats, and PSI domains. Defects in this gene are a cause of Carpenter syndrome 2. Two transcript variants encoding different isoforms have been found for this gene. [provided by RefSeq, Dec 2012],



Western Blot analysis of various cells using EGFL4 Polyclonal Antibody



Western blot analysis of lysates from COLO cells, using MEGF8 Antibody. The lane on the right is blocked with the synthesized peptide.



Western blot analysis of the lysates from COLO205 cells using MEGF8 antibody.

