



## EF-2 rabbit pAb

Cat No.:ES2230

For research use only

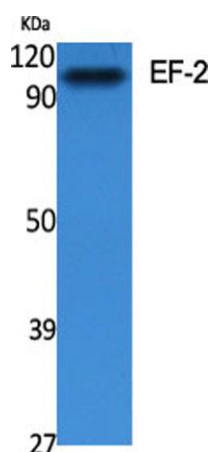
### Overview

<b>Product Name</b>	EF-2 rabbit pAb
<b>Host species</b>	Rabbit
<b>Applications</b>	WB;IHC;IF;ELISA
<b>Species Cross-Reactivity</b>	Human;Mouse;Rat
<b>Recommended dilutions</b>	Western Blot: 1/500 - 1/2000. Immunohistochemistry: 1/100 - 1/300. Immunofluorescence: 1/200 - 1/1000. ELISA: 1/5000. Not yet tested in other applications.
<b>Immunogen</b>	The antiserum was produced against synthesized peptide derived from human eEF2. AA range:31-80
<b>Specificity</b>	EF-2 Polyclonal Antibody detects endogenous levels of EF-2 protein.
<b>Formulation</b>	Liquid in PBS containing 50% glycerol, 0.5% BSA and 0.02% sodium azide.
<b>Storage</b>	Store at -20°C. Avoid repeated freeze-thaw cycles.
<b>Protein Name</b>	Elongation factor 2
<b>Gene Name</b>	EEF2
<b>Cellular localization</b>	Cytoplasm . Nucleus . Phosphorylation by CSK promotes cleavage and SUMOylation-dependent nuclear translocation of the C-terminal cleavage product. .
<b>Purification</b>	The antibody was affinity-purified from rabbit antiserum by affinity-chromatography using epitope-specific immunogen.
<b>Clonality</b>	Polyclonal
<b>Concentration</b>	1 mg/ml
<b>Observed band</b>	100kD
<b>Human Gene ID</b>	1938
<b>Human Swiss-Prot Number</b>	P13639
<b>Alternative Names</b>	EEF2; EF2; Elongation factor 2; EF-2
<b>Background</b>	This gene encodes a member of the GTP-binding translation elongation factor family. This protein is an essential factor for protein synthesis. It promotes

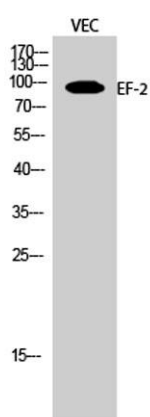




the GTP-dependent translocation of the nascent protein chain from the A-site to the P-site of the ribosome. This protein is completely inactivated by EF-2 kinase phosphorylation. [provided by RefSeq, Jul 2008],

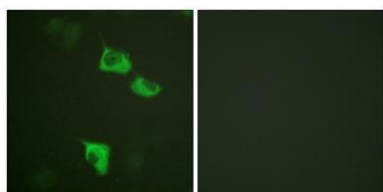


Western Blot analysis of various cells using EF-2 Polyclonal Antibody diluted at 1:2000



Western Blot analysis of VEC cells using EF-2 Polyclonal Antibody diluted at 1:2000

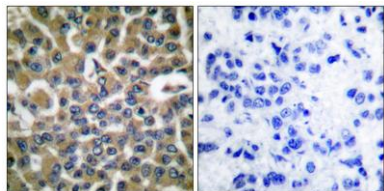
Immunofluorescence analysis of HUVEC cells, using eEF2 Antibody. The picture on the right is blocked with the synthesized peptide.





**ELK Biotechnology**

Immunohistochemistry analysis of paraffin-embedded human breast carcinoma tissue, using eEF2 Antibody. The picture on the right is blocked with the synthesized peptide.



+86-27-59760950

[ELKbio@ELKbiotech.com](mailto:ELKbio@ELKbiotech.com)

[www.elkbiotech.com](http://www.elkbiotech.com)

23-2, No.388 Gaoxin 2nd Road,Wuhan East Lake Hi-tech Development Zone, Hubei , P.R.C