



EDG-7 rabbit pAb

Cat No.:ES2227

For research use only

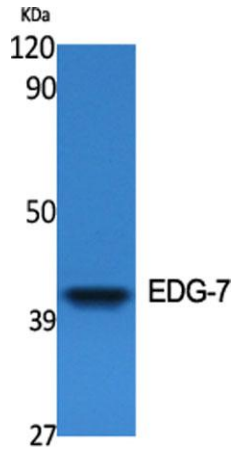
Overview

Product Name	EDG-7 rabbit pAb
Host species	Rabbit
Applications	WB;IHC;IF;ELISA
Species Cross-Reactivity	Human;Rat;Mouse;
Recommended dilutions	Western Blot: 1/500 - 1/2000. Immunohistochemistry: 1/100 - 1/300. Immunofluorescence: 1/200 - 1/1000. ELISA: 1/40000. Not yet tested in other applications.
Immunogen	The antiserum was produced against synthesized peptide derived from human EDG7. AA range:281-330
Specificity	EDG-7 Polyclonal Antibody detects endogenous levels of EDG-7 protein.
Formulation	Liquid in PBS containing 50% glycerol, 0.5% BSA and 0.02% sodium azide.
Storage	Store at -20°C. Avoid repeated freeze-thaw cycles.
Protein Name	Lysophosphatidic acid receptor 3
Gene Name	LPAR3
Cellular localization	Cell membrane; Multi-pass membrane protein.
Purification	The antibody was affinity-purified from rabbit antiserum by affinity-chromatography using epitope-specific immunogen.
Clonality	Polyclonal
Concentration	1 mg/ml
Observed band	47kD
Human Gene ID	23566
Human Swiss-Prot Number	Q9UBY5
Alternative Names	LPAR3; EDG7; LPA3; Lysophosphatidic acid receptor 3; LPA receptor 3; LPA-3; Lysophosphatidic acid receptor Edg-7
Background	lysophosphatidic acid receptor 3(LPAR3) Homo sapiens This gene encodes a member of the G protein-coupled receptor family, as well as the EDG

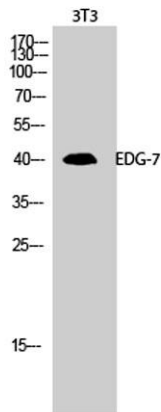




family of proteins. This protein functions as a cellular receptor for lysophosphatidic acid and mediates lysophosphatidic acid-evoked calcium mobilization. This receptor couples predominantly to G(q/11) alpha proteins. [provided by RefSeq, Jul 2008],

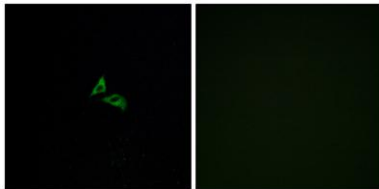


Western Blot analysis of various cells using EDG-7 Polyclonal Antibody



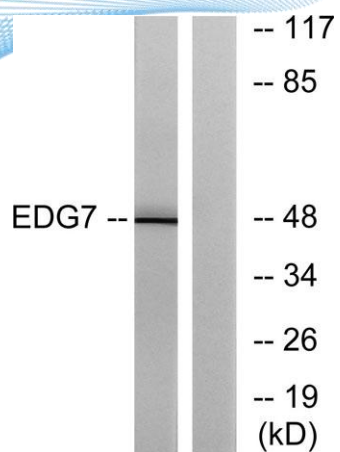
Western Blot analysis of 3T3 cells using EDG-7 Polyclonal Antibody

Immunofluorescence analysis of A549 cells, using EDG7 Antibody. The picture on the right is blocked with the synthesized peptide.





ELK Biotechnology



Western blot analysis of lysates from Jurkat cells, using EDG7 Antibody. The lane on the right is blocked with the synthesized peptide.



+86-27-59760950

ELKbio@ELKbiotech.com

www.elkbiotech.com

23-2, No.388 Gaoxin 2nd Road,Wuhan East Lake Hi-tech Development Zone, Hubei , P.R.C