



# ECP rabbit pAb

Cat No.:ES2221

For research use only

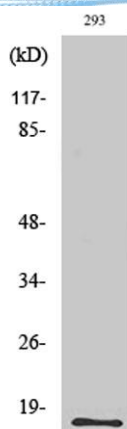
## Overview

<b>Product Name</b>	ECP rabbit pAb
<b>Host species</b>	Rabbit
<b>Applications</b>	WB;ELISA
<b>Species Cross-Reactivity</b>	Human;Rat;Mouse;
<b>Recommended dilutions</b>	Western Blot: 1/500 - 1/2000. ELISA: 1/10000. Not yet tested in other applications.
<b>Immunogen</b>	The antiserum was produced against synthesized peptide derived from human ECP. AA range:102-151
<b>Specificity</b>	ECP Polyclonal Antibody detects endogenous levels of ECP protein.
<b>Formulation</b>	Liquid in PBS containing 50% glycerol, 0.5% BSA and 0.02% sodium azide.
<b>Storage</b>	Store at -20°C. Avoid repeated freeze-thaw cycles.
<b>Protein Name</b>	Eosinophil cationic protein
<b>Gene Name</b>	RNASE3
<b>Cellular localization</b>	Secreted. Located in the matrix of eosinophil large specific granule, which are released following activation by an immune stimulus.
<b>Purification</b>	The antibody was affinity-purified from rabbit antiserum by affinity-chromatography using epitope-specific immunogen.
<b>Clonality</b>	Polyclonal
<b>Concentration</b>	1 mg/ml
<b>Observed band</b>	18kD
<b>Human Gene ID</b>	6037
<b>Human Swiss-Prot Number</b>	P12724
<b>Alternative Names</b>	RNASE3; ECP; RNS3; Eosinophil cationic protein; ECP; Ribonuclease 3; RNase 3
<b>Background</b>	The protein encoded by this gene belongs to the pancreatic ribonuclease family, a subset of the ribonuclease A superfamily. The protein exhibits antimicrobial activity against pathogenic bacteria [provided by RefSeq, Oct 2014],

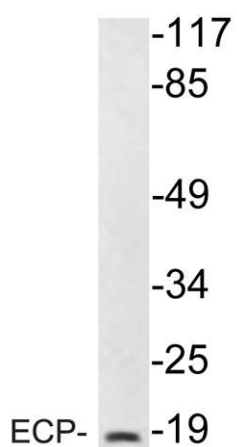




**ELK Biotechnology**



Western Blot analysis of various cells using ECP Polyclonal Antibody



Western blot analysis of lysate from 293 cells, using ECP antibody.



+86-27-59760950

[ELKbio@ELKbiotech.com](mailto:ELKbio@ELKbiotech.com)

[www.elkbiotech.com](http://www.elkbiotech.com)

23-2, No.388 Gaoxin 2nd Road, Wuhan East Lake Hi-tech Development Zone, Hubei, P.R.C