



DSCR 1 rabbit pAb

Cat No.:ES2204

For research use only

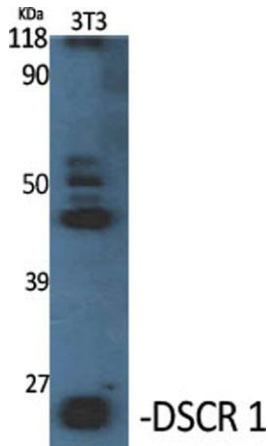
Overview

Product Name	DSCR 1 rabbit pAb
Host species	Rabbit
Applications	WB;ELISA
Species Cross-Reactivity	Human;Mouse;Rat
Recommended dilutions	Western Blot: 1/500 - 1/2000. ELISA: 1/10000. Not yet tested in other applications.
Immunogen	The antiserum was produced against synthesized peptide derived from human RCAN1. AA range:201-250
Specificity	DSCR 1 Polyclonal Antibody detects endogenous levels of DSCR 1 protein.
Formulation	Liquid in PBS containing 50% glycerol, 0.5% BSA and 0.02% sodium azide.
Storage	Store at -20°C. Avoid repeated freeze-thaw cycles.
Protein Name	Calcipressin-1
Gene Name	RCAN1
Cellular localization	intracellular,nucleus,cytoplasm,
Purification	The antibody was affinity-purified from rabbit antiserum by affinity-chromatography using epitope-specific immunogen.
Clonality	Polyclonal
Concentration	1 mg/ml
Observed band	22kD
Human Gene ID	1827
Human Swiss-Prot Number	P53805
Alternative Names	RCAN1; ADAPT78; CSP1; DSC1; DSCR1; Calcipressin-1; Adapt78; Down syndrome critical region protein 1; Myocyte-enriched calcineurin-interacting protein 1; MCIP1; Regulator of calcineurin 1
Background	The protein encoded by this gene interacts with calcineurin A and inhibits calcineurin-dependent signaling pathways, possibly affecting central

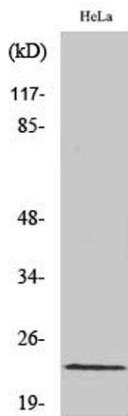




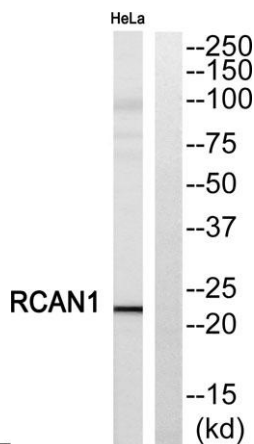
nervous system development. This gene is located in the minimal candidate region for the Down syndrome phenotype, and is overexpressed in the brain of Down syndrome fetuses. Chronic overexpression of this gene may lead to neurofibrillary tangles such as those associated with Alzheimer disease. Alternative splicing results in multiple transcript variants. [provided by RefSeq, Nov 2013],



Western Blot analysis of various cells using DSCR 1
Polyclonal Antibody diluted at 1:1000



Western Blot analysis of HeLa cells using DSCR 1
Polyclonal Antibody diluted at 1:1000

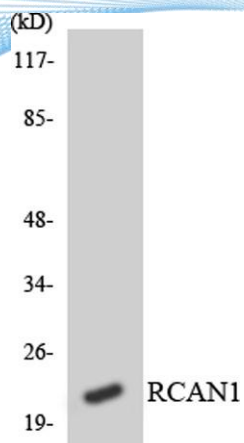


Western blot analysis of RCAN1 Antibody. The lane on the right is blocked with the RCAN1 peptide.





ELK Biotechnology



Western blot analysis of the lysates from HT-29 cells using RCAN1 antibody.



+86-27-59760950

ELKbio@ELKbiotech.com

www.elkbiotech.com

23-2, No.388 Gaoxin 2nd Road,Wuhan East Lake Hi-tech Development Zone, Hubei , P.R.C